

LED Downlights

LD Series

CLIPSAL[®]

by Schneider Electric



Designed for high output
and efficiency

clipsal.com

L I G H T I N G

LED Downlights

LD Series

Frosted lens and recessed trim

With a stylish frosted lens finish and dimmable driver, Clipsal by Schneider Electric's range of affordable LD Series LED Downlights combine style with substance.

Smooth dimming

Specifically designed and tested to work together with the Clipsal 32E450 Universal Dimmer series, LD Series LED Downlights overcome the frustration of flickering and lag caused by incompatible products.

This built-in compatibility will satisfy the highest expectations from the day they are installed and for many years to come.

Energy efficiency

While providing a high lumen output suitable for general lighting, the LD Series is also an extremely energy-efficient option that will assist in reducing operating costs.

Stylish design

With their attractive recessed fitting and a clean frosted diffuser to ensure maximum light spread, LD Series LED Downlights not only perform brilliantly, they look fabulous while they're doing it.

Built in compatibility

Low profile heat sink, perfect for installation in restricted ceiling cavities.



Frosted diffuser offers greater beam spread.

LDW11WH

30,000 hours
lifespan



38mm



100mm

11W LED Downlight

Cut-out \varnothing 88mm

Energy savings and reduced running costs

Built-in wire guard for added protection against dust, insects and insulation.

Wide lip allows for easier retrofitting.



Frosted diffuser removes the visibility of individual LEDs.

LDW15BC

Long life

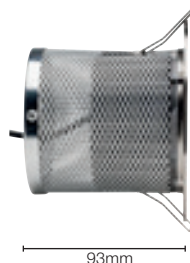
The inconvenience of regularly changing globes becomes a thing of the past. With a rated lamp life of 30,000 hours, the LD Series LED Downlights will pay for themselves many times over.

Specifications

- Dimmable with the Clipsal 32E450 Universal Dimmer Mech.
- Products available in two lamp temperatures: Warm White (3000K) or Cool White (4000K).
- High lumen output: 11W (600lm) and 15W (900lm).
- 30,000 hours rated lamp life to L70.
- Wide beam angle of greater than 150 degrees for large light spread.
- IP44 rated.

15W LED Downlight

Cut-out Ø90mm



93mm



120mm

Genuine Clipsal
dimming capability

Product range

11W LED Downlight Kit - complete with fitting, 150 degree LED lamp, driver, flex and plug

Catalogue Number	Description	Colour
LDW11WH	150 Degrees, Warm White, 3000k	White fixed fitting
LDW11BC	150 Degrees, Warm White, 3000k	Brushed chrome fixed fitting
LDC11WH	150 Degrees, Cool White, 4000k	White fixed fitting
LDC11BC	150 Degrees, Cool White, 4000k	Brushed chrome fixed fitting

15W LED Downlight Kit - complete with fitting, 155 degree LED lamp, driver, flex and plug

Catalogue Number	Description	Colour
LDW15WH	155 Degrees, Warm White, 3000k	White fixed fitting
LDW15BC	155 Degrees, Warm White, 3000k	Brushed chrome fixed fitting
LDC15WH	155 Degrees, Cool White, 4000k	White fixed fitting
LDC15BC	155 Degrees, Cool White, 4000k	Brushed chrome fixed fitting



Take advantage of the energy savings that Clipsal LD Series LED Downlights have to offer.

Contact your local Clipsal and Schneider Electric Partner Business Representative,

electrical wholesaler or visit clipsal.com



Schneider Electric (Australia) Pty Ltd

33-37 Port Wakefield Road, Gepps Cross
South Australia 5094

PO Box 132, Enfield Plaza,
South Australia 5085

National Customer Care Enquiries:
1300 2025 25

clipsal.com

Website: clipsal.com
Contact us: clipsal.com/feedback

You can find this brochure and many others
online in PDF format at: clipsal.com
Follow the links off the home page or access
the following page directly:
clipsal.com/brochures

Schneider Electric (Australia) Pty Ltd reserves the right to change specifications, modify designs and discontinue items without incurring obligation and whilst every effort is made to ensure that descriptions, specifications and other information in this catalogue are correct, no warranty is given in respect thereof and the company shall not be liable for any error therein.

© 2013 Schneider Electric. All Rights Reserved.
Trademarks are owned by Schneider Electric Industries SAS or its affiliated companies.

This document has been printed using FSC Mix Certified paper. ISO 14001 environmental management system in use at mill.