



LOUDSPEAKERS

BLENDING HIGH FIDELITY AND ARCHITECTURE®



LOUDSPEAKER PRODUCT CATALOG

2011

A History of INNOVATION



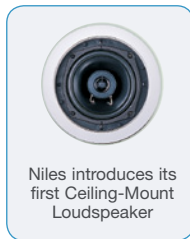
For over 33 years, the custom installation industry has turned to Niles for high-performance, application-specific products. This is especially true in multi-zone audio. Our first consumer products—a four-pair speaker selector box and a patching matrix—were relatively simple devices, but in retrospect they were the precursors to today's sophisticated multi-zone systems. Throughout its history, Niles has always been at the forefront of multi-zone innovation.

Our comprehensive assortment provides a virtual one-stop-shop that simplifies your purchasing, receiving, and accounting procedures, while our unbeatable dealer incentive programs provide you with high attainable profit potential. And rest assured, Niles will treat you with the utmost respect, and deliver the kind of service and support one expects from us.



Niles introduces its first In-Wall Loudspeaker

1988



Niles introduces its first Ceiling-Mount Loudspeaker

1990



Niles introduces its first Indoor/Outdoor Loudspeaker

1994



Niles introduces its Advanced Technology Loudspeakers

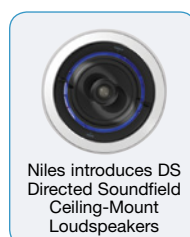
Niles introduces its first In-Wall Home Theater Loudspeakers featuring Directed Soundfield Geometry®

1997



Niles introduces its first Stereo Input (SI) Loudspeaker

1999



Niles introduces DS Directed Soundfield Ceiling-Mount Loudspeakers

2001



Niles introduces GeoRealistic™ Rock Loudspeakers

2004



Niles rocks the industry with the introduction of StageFront Home Theater Solutions

2007



Niles introduces the groundbreaking Designer Series Ceiling-Mount Loudspeakers

2010



LOUDSPEAKERS

CONTENTS

DS DIRECTED SOUNDFIELD® CEILING-MOUNT LOUDSPEAKERS

Overview4
7" Models & Accessories10
8" Models & Accessories12

CEILING-MOUNT LOUDSPEAKERS

Overview14
6" Models16
7" Models17
8" Models22
Accessories24

IN-WALL LOUDSPEAKERS

Overview28
5" Models30
6" Models32
8" Models34
Accessories35

HD HIGH DEFINITION LOUDSPEAKERS

Overview38
All Models	40-41

PHD PLASMA HIGH DEFINITION LOUDSPEAKERS

Overview42
All Models45

STAGEFRONT™ HOME THEATER LOUDSPEAKERS

Overview46
Cabinet Models	48-51
Cloth Grilles	51-54
In-Wall Models55

SUBWOOFERS

Overview58
Subwoofer Amplifier59
Cabinet Models60
In-Wall Models61

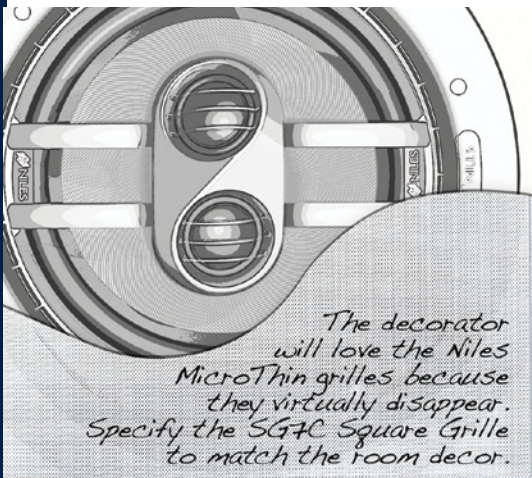
WEATHER-PROOF OUTDOOR LOUDSPEAKERS

OS Loudspeakers62
GeoRealistic™ Rock Loudspeakers70
Planter Speakers77

QUICK REFERENCE GUIDE	78-81
--	-------

ADDITIONAL INFORMATION83
---	-----

2011



NILES DS DS-FX

Client wants a High-Definition Home Theater but doesn't want the speakers visible in the room

The decorator will love the Niles MicroThin grilles because they virtually disappear. Specify the SG4C Square Grille to match the room decor.

INSTALL WITH REAR WAVE CONTROL ENCLOSURE TO NOT DISTURB THE BABY'S ROOM



A REDEFINING MOMENT

The New DS Directed Soundfield™ Ceiling-Mount Loudspeaker

When Niles presented the first Directed Soundfield™ (DS) loudspeakers in 2001 at CEDIA Expo in Indianapolis, everyone was astounded by the performance and versatility they provided. People quickly agreed that the unique design with fully adjustable, independent pivoting woofer and tweeter enabled DS loudspeakers to recreate high-fidelity sound accurately, regardless of where in the ceiling they were located. Ever since then, tens of thousands of DS loudspeakers have been delighting customers in distributed audio and home theater systems around the world. But it was bound to happen—we have created a new version of DS that does even more!

The result is our third generation of Directed Soundfield loudspeakers—they ingeniously combine design aesthetics, advanced technology, and installation versatility to address the challenges professional system

integrators face today. These challenges include seamless integration with high-design décor, containing unwanted sound from bleeding into other rooms, and lifelike sonic quality not available from conventional loudspeakers. To do this, we took the best ideas from the original DS design architecture and infused them with significant and innovative new features.

The new features include magnetically attached MicroThin™ speaker grilles for a clean, designer appearance, and an optional Rear Wave Control enclosure that significantly reduces the sound bleed into adjacent rooms. Also new is a spring-tensioned mounting clamp system that tightly secures the loudspeaker—even if the mounting surface expands or contracts.

DESIGNER AESTHETICS

Interior design professionals will appreciate the low-profile, magnetically attached MicroThin™ grilles, which blend unobtrusively with the room's décor. Paintable grilles and an optional square form factor provide the designer with the freedom to match room treatments and colors. With DS loudspeakers, it's easy to create a great sounding audio system that's also easy to live with.



AUDIOPHILE PERFORMANCE

DS Directed Soundfield™ loudspeakers have the ability to adapt to any room environment. The patented* pivoting driver assembly with a new patent-pending, smooth-action mechanism enables independent adjustment of the tweeter and woofer so sound is directed to the optimum location. In addition, advanced driver materials, high-quality crossovers, and pivoting woofers and tweeters work in concert to provide a listening experience that sets the standard for ceiling-mount loudspeakers.



INSTALLATION EASE

New, patent-pending spring-tensioned mounting clamps adjust for uneven mounting surfaces and automatically compensate for the expansion and contraction of building materials. DS loudspeakers are weather-resistant and can be installed in moist areas such as saunas, bathrooms, and outdoor patios under eaves. Backed by our Lifetime Limited Warranty, DS loudspeakers install securely and provide years of listening pleasure.

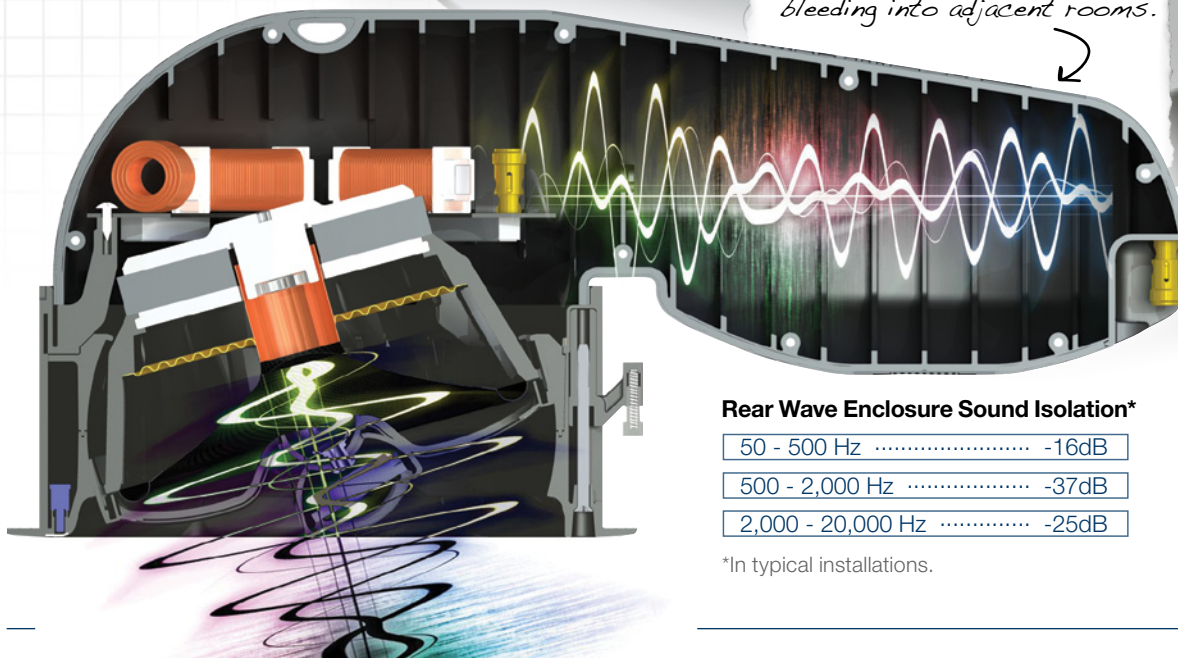


The Anatomy of Innovation...

Patented Directed Soundfield™ technology directs the sound to the listening area, regardless of where in the ceiling the loudspeaker is located.

Patent-pending pivot assembly ensures that the woofer rotates smoothly and then stays securely in place.

The optional Rear Wave enclosure improves sound performance while reducing unwanted sound from bleeding into adjacent rooms.



Rear Wave Enclosure Sound Isolation*

50 - 500 Hz	-16dB
500 - 2,000 Hz	-37dB
2,000 - 20,000 Hz	-25dB

*In typical installations.

The Benefits of Good Design...

CREATE THE IDEAL LISTENING ENVIRONMENT

Patented Directed Soundfield™ technology directs the sound to the listening area, regardless of where the loudspeakers are installed.

UNOBTRUSIVE APPEARANCE

Rustproof MicroThin™ loudspeaker grilles mount flush to the ceiling or wall to seamlessly blend with the room's décor.

SUPERB SOUND QUALITY

IMPACT (Improved Aluminum Ceramic Technology) woofers and tweeters and other advanced materials ensure superb sound resolution.

MATCH ROOM COLORS AND AESTHETICS

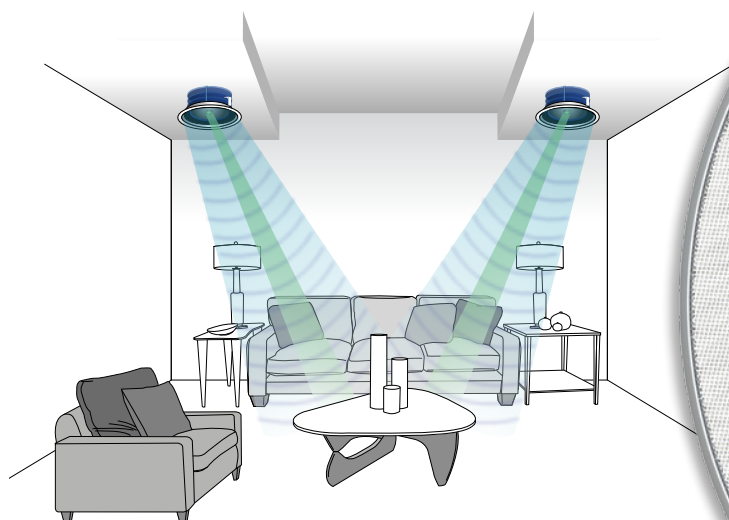
MicroThin speaker grilles can be painted to coordinate with any décor. Choose from round (included) or square (optional) grilles.

HIGHER OUTPUT, LOWER DISTORTION

Precision crossover networks, copper shorting caps, and Kapton voice coil formers easily handle the demands of digital music and home theater.

INSTALL WITH CONFIDENCE

Patent-pending spring-tensioned mounting clamps simplify installation and compensate for expanding and contracting mounting surfaces.



MicroThin™ grilles attach magnetically for a clean, unobtrusive look. Optional square grilles provide added design flexibility.

A Loudspeaker for Every Application...

MULTIZONE APPLICATIONS

DS7MP, DS7PR, DS8PR

Directed Soundfield™ MP and PR loudspeakers are great for stereo sound and home theater applications. For basic background listening, we recommend the DS7MP. With glass fiber woofer cones, UltraSilk® tweeters, and Directed Soundfield pivoting woofer technology, the DS7MP provides smooth, lifelike sound reproduction, even when installed in vaulted or cathedral ceilings. For even better sound, step up to the DS7PR and the DS8PR. An upgraded Teteron® tweeter and computer-optimized 3rd and 4th order Linkwitz-Riley crossover reproduce every musical detail with exceptional accuracy.



HOME THEATER APPLICATIONS

DS7HD & DS7FX, DS8HD & DS8FX

Directed Soundfield HD and FX loudspeakers are the front-row ticket for the ultimate home theater. We recommend the DS7HD or DS8HD for the left/center/right channels because their advanced IMPACT drivers, oversized voice coils, and premium crossovers have the guts to handle the dynamics of home theater. A Dialogue Compensation Switch is also provided for midrange emphasis when used for the center channel. FX surround effects models feature a Diffuse / Direct Switch to create spacious surround sound that optimally “envelops” the listener.



SINGLE LOUDSPEAKER APPLICATIONS

DS7SI

Trying to fit two loudspeakers into a small area for stereo sound is sometimes not practical. In small kitchens, foyers, bathrooms, and other tight spaces we recommend the DS7SI stereo input loudspeaker. When located close to the center of the room, the DS7SI reproduces a convincing “stereo” sound from a single, easy-to-install loudspeaker.



...And Every Installation.

APPLICATION-SPECIFIC DESIGN

Niles Directed Soundfield Loudspeakers are organized into logical groupings based on application and function, making DS loudspeakers easy to specify, while delivering optimum performance for every installation.

MP - MULTIPURPOSE

A versatile ceiling-mount loudspeaker that performs well for background music and home theater.

Applications include:

- Blending with light can fixtures
- Distributed audio
- Left/center/right channel for family room, home theaters
- Outdoors on the patio



DS7MP

PR - PERFORMANCE

The perfect blend between value and performance, these loudspeakers deliver high-performance sound in a wide variety of applications.

Applications include:

- Blending with light can fixtures
- Secondary or primary listening rooms
- Family rooms, kitchens, and bedrooms
- Left/center/right channel for home theaters



DS7PR



DS8PR

HD - HIGH DEFINITION

Provide superior sound quality and longevity by utilizing advanced components, materials, and circuit design.

Applications include:

- Left/center/right channel for advanced home theaters
- Primary listening rooms



DS7HD



DS8HD

FX - SURROUND EFFECTS

Ceiling-mount loudspeakers for the surround effects (rear, side) channel in a wide variety of home theater and multi-channel music applications.

Applications include:

- 5.1 and 7.1-channel home theater systems
- Multi-channel music systems



DS7FX



DS8FX

SI - STEREO INPUT

Provides stereo sound from a single, unobtrusive loudspeaker—ideal for locations that cannot support more than one loudspeaker.

Applications include:

- Hallways, foyers, kitchens
- Commercial applications such as restaurant bathrooms and small dining areas



DS7SI

7" DIRECTED SOUNDFIELD™ CEILING-MOUNT LOUDSPEAKERS

DS7MP

7" Directed Soundfield™ Left/Center/Right Loudspeaker

For distributed audio, background music, and home theater applications



Stock Number FG01614
Packaged Individually with Round MicroThin™ Grille

Features

- Integrated baffle/frame assembly
- 7" glass fiber woofer cone with curvilinear profile
- 1" UltraSilk® soft dome tweeter
- Dialogue switch for center channel applications
- Tweeter level switch
- Weather-resistant construction

Specifications

- Recommended amplifier power: 10 - 130 watts
- Impedance: 8 ohm nominal; 6 ohm minimum
- Frequency response: 55 Hz to 21 kHz +/- -3 dB
- Frame dimensions (with grille): 9-7/8" (25.15 cm) diameter
- Hole cutout dimensions: 8-1/2" (21.6 cm) diameter
- Depth behind ceiling (5/8" drywall): 5-5/16" (13.6 cm)

Warranty: Lifetime Limited

Shipping weight: 6 lbs. (2.72 kg)

DS7PR

7" Directed Soundfield™ Left/Center/Right Loudspeaker

For primary and secondary listening rooms and home theater applications



Stock Number FG01617
Packaged Individually with Round MicroThin™ Grille

Features

- Integrated baffle/frame assembly
- 7" glass fiber woofer cone with curvilinear profile
- 1" fluid-cooled Teteron® dome tweeter
- Dialogue switch for center channel applications
- Tweeter level switch
- Weather-resistant construction

Specifications

- Recommended amplifier power: 10 - 130 watts
- Impedance: 8 ohm nominal; 6 ohm minimum
- Frequency response: 52 Hz to 21 kHz +/- -3 dB
- Frame dimensions (with grille): 9-7/8" (25.15 cm) diameter
- Hole cutout dimensions: 8-1/2" (21.6 cm) diameter
- Depth behind ceiling (5/8" drywall): 5-5/16" (13.6 cm)

Warranty: Lifetime Limited

Shipping weight: 6 lbs. (2.72 kg)

DS7HD

7" Directed Soundfield™ Left/Center/Right Loudspeaker

For advanced home theaters and primary listening rooms



Stock Number FG01621
Packaged Individually with Round MicroThin™ Grille

Features

- Integrated baffle/frame assembly
- 7" IMPACT (Improved Aluminum Ceramic Technology) woofer cone
- 1" nano-coated IMPACT (Improved Aluminum Ceramic Technology) tweeter
- Kapton non-conductive voice coil former and copper shorting caps
- Dialogue switch for center-channel applications
- Tweeter level switch
- Weather-resistant construction

Specifications

- Recommended amplifier power: 10 - 160 watts
- Impedance: 8 ohm nominal; 6 ohm minimum
- Frequency response: 48 Hz to 21 kHz +/- -3 dB
- Frame dimensions (with grille): 9-7/8" (25.15 cm) diameter
- Hole cutout dimensions: 8-1/2" (21.6 cm) diameter
- Depth behind ceiling (5/8" drywall): 5-5/16" (13.6 cm)

Warranty: Lifetime Limited

Shipping weight: 6 lbs. (2.72 kg)

7" DIRECTED SOUNDFIELD™ CEILING-MOUNT LOUDSPEAKERS

DS7FX

7" Directed Soundfield™ Surround Effects Loudspeaker

For surround effects in multi-channel home theater applications



Features

- Integrated baffle/frame assembly
- 7" glass fiber woofer cone with curvilinear profile
- Dual 1" fluid-cooled Teteron® dome tweeters
- Multi-axis tweeter array positions tweeters at an opposing angle
- Bipole/Dipole switch for room matching
- Weather-resistant construction

Specifications

- Recommended amplifier power: 10 - 140 watts
- Impedance: 8 ohm nominal; 6 ohm minimum
- Frequency response: 52 Hz to 21 kHz +/- -3 dB
- Frame dimensions (with grille): 9-7/8" (25.15 cm) diameter
- Hole cutout dimensions: 8-1/2" (21.6 cm) diameter
- Depth behind ceiling (5/8" drywall): 5-5/16" (13.6 cm)

Warranty: Lifetime Limited

Shipping weight: 12 lbs. (5.44 kg)

Stock Number FG01618 Packaged in Pairs with Round MicroThin™ Grilles

DS7SI

7" Directed Soundfield™ Stereo Input Loudspeaker

For multipurpose single speaker stereo applications



Features

- Integrated baffle/frame assembly
- 7" glass fiber woofer cone with a curvilinear profile
- Dual 1" UltraSilk® soft dome tweeters
- Bridge-mounted Stereo Imaging (SI) tweeter array directs the high-frequency sounds from the left and right channels at opposing angles
- Weather-resistant construction

Specifications

- Recommended amplifier power: 10 - 130 watts
- Impedance: 8 ohm nominal; 6 ohm minimum
- Frequency response: 55 Hz to 21 kHz +/- -3 dB
- Frame dimensions (with grille): 9-7/8" (25.15 cm) diameter
- Hole cutout dimensions: 8-1/2" (21.6 cm) diameter
- Depth behind ceiling (5/8" drywall): 5-5/16" (13.6 cm)

Warranty: Lifetime Limited

Shipping weight: 6 lbs. (2.72 kg)

Stock Number FG01616 Packaged Individually with Round MicroThin™ Grille

7" DIRECTED SOUNDFIELD™ CEILING-MOUNT LOUDSPEAKER ACCESSORIES

RWE7C

7" Rear Wave Control Enclosure



- Provides superior-quality predictable sound
- Reduces sound transfer into adjacent rooms or spaces
- Not for use with the DS7SI

Stock Number FG01643

Master Carton 2 Individual

SG7C

7" Square MicroThin™ Grilles

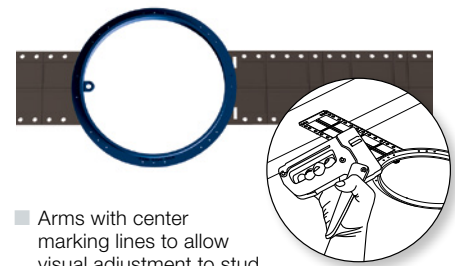


- Corrosion-resistant MicroPerf™ grille material
- Can be painted to match room color
- Packaged in Pairs

Stock Number FG01645

Master Carton 4 Pairs

NCB7C



- Arms with center marking lines to allow visual adjustment to stud
- Packaged in Pairs

Easily stapled or screwed into place

Stock Number FG01647

Master Carton 4 Pairs

8" DIRECTED SOUNDFIELD™ CEILING-MOUNT LOUDSPEAKERS

DS8PR

8" Directed Soundfield™ Left/Center/Right Loudspeaker

For primary and secondary listening rooms and home theater applications.



Stock Number FG01619 Packaged Individually with Round MicroThin™ Grille

Features

- Integrated baffle/frame assembly
- 8" glass fiber woofer cone with curvilinear profile
- 1" fluid-cooled Teteron® dome tweeter
- 1-1/2" fluid-cooled Teteron® dome midrange
- Dialogue switch for home theater applications
- Tweeter level switch
- Weather-resistant construction

Specifications

- Recommended amplifier power: 10 - 140 watts
- Impedance: 8 ohm nominal; 6 ohm minimum
- Frequency response: 48 Hz to 21 kHz +/- -3 dB
- Frame dimensions (with grille): 11-1/4" (28.52 cm) diameter
- Hole cutout dimensions: 9-3/4" (24.76 cm) diameter
- Depth behind ceiling (5/8" drywall): 5-5/16" (13.6 cm)

Warranty: Lifetime Limited

Shipping weight: 7 lbs. (3.17 kg)

DS8HD

8" Directed Soundfield™ Left/Center/Right Loudspeaker

For advanced home theaters and primary listening rooms.



Stock Number FG01623 Packaged Individually with Round MicroThin™ Grille

Features

- Integrated baffle/frame assembly
- 8" IMPACT (Improved Aluminum Ceramic Technology) woofer cone
- 1" nano-coated IMPACT (Improved Aluminum Ceramic Technology) tweeter
- 1-1/2" nano-coated IMPACT dome midrange
- Kapton non-conductive voice coil former and copper shorting caps
- Dialogue switch for center channel applications
- Tweeter level switch
- Weather-resistant construction

Specifications

- Recommended amplifier power: 10 - 160 watts
- Impedance: 8 ohm nominal; 6 ohm minimum
- Frequency response: 48 Hz to 21 kHz +/- -3 dB
- Frame dimensions (with grille): 11-1/4" (28.52 cm) diameter
- Hole cutout dimensions: 9-3/4" (24.76 cm) diameter
- Depth behind ceiling (5/8" drywall): 5-5/16" (13.6 cm)

Warranty: Lifetime Limited

Shipping weight: 7 lbs. (3.17 kg)

8" DIRECTED SOUNDFIELD™ CEILING-MOUNT LOUDSPEAKERS

DS8FX

8" Directed Soundfield™ Surround Effects Loudspeaker

For surround effects in multi-channel home theater applications



Features

- Integrated baffle/frame assembly
- 8" IMPACT (Improved Aluminum Ceramic Technology) woofer cone
- Dual 1" nano-coated IMPACT dome tweeters
- Multi-axis tweeter array positions tweeters at an opposing angle
- Bipole/Dipole switch for room matching
- Weather-resistant construction

Specifications

- Recommended amplifier power: 10 - 160 watts
- Impedance: 8 ohm nominal; 6 ohm minimum
- Frequency response: 48 Hz to 21 kHz +/- 3 dB
- Frame dimensions (with grille): 11-1/4" (28.52 cm) diameter
- Hole cutout dimensions: 9-3/4" (24.76 cm) diameter
- Depth behind ceiling (5/8" drywall): 5-5/16" (13.6 cm)

Warranty: Lifetime Limited

Shipping weight: 14 lbs. (6.34 kg)

Stock Number Packaged in Pairs with
 FG01624 Round MicroThin™ Grilles

8" DIRECTED SOUNDFIELD™ CEILING-MOUNT LOUDSPEAKER ACCESSORIES

RWE8C

8" Rear Wave Control Enclosure



- Provides superior-quality predictable sound
- Reduces sound transfer into adjacent rooms or spaces

Stock Number
 FG01644

Master Carton
 2 Individual

SG8C

8" Square MicroThin™ Grille Cover



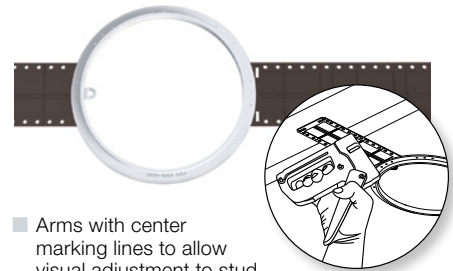
- Corrosion-resistant MicroPerf™ grille material
- Can be painted to match room color
- Packaged in Pairs

Stock Number
 FG01646

Master Carton
 4 Pairs

NCB8C

8" New Construction Bracket



- Arms with center marking lines to allow visual adjustment to stud
- Packaged in Pairs

Easily stapled or screwed into place

Stock Number
 FG01648

Master Carton
 4 Pairs



NEW CM SERIES

Introducing the new CM Series of Ceiling-Mount Loudspeakers

Niles didn't become The First Name in Custom Installation® overnight. Over 33 years in the industry have shown our customers that the key to our success has been our Application Specific Design Philosophy – loudspeakers that are designed for a specific purpose and organized based upon logical groupings and functions. The new CM Series takes that idea even further. As a complement to our highly-acclaimed DS Loudspeaker models, you can now offer your customers a complete loudspeaker assortment that is simple to sell, simple to install and offers easy options for both retrofits and system upgrades.

When developing this new CM Series, we took care to integrate many of the great features of our incredible DS models, from the stylish round or optional square MicroThin™ grilles that disappear into the décor to the advanced driver technology of our UltraSilk®, Teteron® and top of the line nano-coated IMPACT (Improved Aluminum Ceramic Technology) woofers and tweeters. All of this comes together in each model to deliver the defined bass, silky-smooth mid-ranges and crisp vocals you have come to expect from Niles.

With our new CM series, you now have even more options to select the best speaker for each particular function and location in a home. System designers can now specify a single cutout hole size and have a full range of application-specific loudspeakers ranging in price from an MSRP of either \$200 to \$900 a pair for our 7" models to \$360 to \$1,500 a pair for our 8" models.

Imagine how much simpler it will be as a system designer or as an installer if you know that you can go to any home and use a single hole size in every speaker location. With that simple step, you are now ready to install from any of the Niles application-specific models to get just the right one for each location. Even better, upgrading any of the locations to a different model is now as easy as can be with a full range of models all using the same hole size. Last minute changes from your customers don't have to cost your valuable installation crew any additional time. Just give your crew the new speaker and the right hole was already cut and is ready for the change!

The Benefits of Good Design...

SIMPLE TO SPECIFY, SIMPLE TO INSTALL

By specifying a single cutout hole size, you are free to install any of a full range of application specific models. Changing or upgrading a model after the hole has been cut no longer means extra work for your installation crew.

UNOBTRUSIVE APPEARANCE

Rustproof MicroThin™ loudspeaker grilles mount flush to the ceiling or wall to seamlessly blend with the room's décor.

MATCH ROOM COLORS AND AESTHETICS

MicroThin speaker grilles can be painted to coordinate with any décor. Choose from round (included) or square (optional) grilles.

HIGHER OUTPUT, LOWER DISTORTION

Precision crossover networks, copper shorting caps, and Kapton® voice coil formers easily handle the demands of digital music and home theater.

NEW Application Specific Models

Our new CM4PR is designed for small rooms, closets, hallways, or alcoves where traditional loudspeakers just won't fit. Its round (or optional square) MicroThin™ grille matches that of all of our other CM and DS models and its custom Rear Wave Enclosure will keep any unwanted sound from penetrating into adjoining spaces.

Our new CM7SD Shallow Depth loudspeaker can be installed in a ceiling that is only 2 1/8" deep! Its powder-coated steel cover not only protects it during installation in tight spaces but also helps to minimize sound penetration into adjoining areas, which can be a real problem in specialized ceiling installations like in a multi-dwelling unit.

Whatever your application or need, Niles makes the loudspeaker that will help you to delight your customers!



4" 2-WAY CEILING-MOUNT LOUDSPEAKER

CM4PR

3.5" 2-Way Ceiling-Mount Performance Loudspeaker

For smaller spaces or wherever preventing sound bleed-through to other spaces is critical



Stock Number FG01657
 Packaged Individually with Round MicroThin Grille

Features

- Custom Rear Wave Enclosure enhances acoustic performance while limiting sound from bleeding through to adjacent spaces
- Mineral-Filled Polypropylene cone is extremely rigid to reduce breakup, lower distortion and provide enhanced bass response
- Butyl rubber surround damps resonance and provides exceptional durability
- 1" fluid-cooled Teteron® dome tweeter offers ultra-wide dispersion and silky-smooth high-frequency response
- Easy to Use Tri-mount clips provide for quick installation
- Magnetically attached, rust-resistant grille covers install quickly and provide a low profile look
- Weather resistant construction reduces installation limitations and provides unique solutions in moist

Specifications

- Frequency Response: 70Hz to 21kHz +/-3dB
- Impedance: 8 ohm nominal; 6 ohm minimum
- Recommended Amplifier Power: 25 to 100 Watts
- Depth behind ceiling (5/8" drywall): 3 5/16" (8.4 cm)

Warranty: Lifetime Limited

4" CEILING-MOUNT LOUDSPEAKER ACCESSORIES

SG4C

4" Square MicroThin™ Grilles

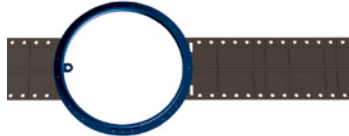


- Corrosion-resistant MicroThin™ grille material
- Can be painted to match room color
- Packaged in Pairs

Stock Number FG01674
Master Carton 4 Pairs

NCB4C

4" New Construction Bracket



- Arms with center marking lines to allow visual adjustment to stud
- Packaged in Pairs

Stock Number FG01673
Master Carton 4 Pairs

7" 2-WAY CEILING-MOUNT LOUDSPEAKERS

CM7BG
7" 2-Way Background Loudspeaker

For use in non-primary listening areas



Stock Number Packaged Individually with
 FG01655 Round MicroThin™ Grille

Features

- Integrated woofer/baffle design delivers greater low frequency response by employing a larger 7" woofer where competitive models of the same outer size employ only 6 1/2" woofers in the same size speaker installation
- Polypropylene cone is light, strong and well damped to provide "best in class" bass response
- Treated urethane surround increases sensitivity while preserving durability
- 13mm Kaladex® tweeter with fluid cooling provides wide dispersion for clear and detailed high frequencies
- Magnetically attached, rust-resistant grille covers install quickly and provide a low profile look
- Weather resistant construction reduces installation limitations and provides unique solutions in moist environments or outdoors under eaves

Specifications

- Recommended Amplifier Power: 10 to 75 Watts
- Impedance: 8 ohm nominal; 6 ohm minimum
- Frequency Response: 58Hz to 20kHz +/-3dB
- Voice coil size: 3/4"
- Frame Dimensions: 9 7/8 inches (25.1 cm)
- Hole cutout dimensions: 8 1/2 inches (21.6 cm)
- Depth behind ceiling (5/8" drywall): 3 3/4" (9.5 cm)

Warranty: Lifetime Limited

CM7SD
7" 2-way Shallow Depth Ceiling-Mount Loudspeaker



Stock Number Packaged Individually with
 FG01665 Round MicroThin™ Grille

Features

- 7" Mineral-Filled Polypropylene woofer cone is extremely rigid to reduce breakup, lower distortion and provide enhanced bass response
- Butyl rubber cone surround damps resonance and provides exceptional durability
- 3/4" soft dome tweeter offers wide dispersion and silky-smooth high-frequency response
- Magnetically attached, rust-resistant grille covers install quickly and provide a low profile look
- Shallow Depth Design permits installation in a ceiling depth of as small as 2-1/8" behind 5/8" drywall Rear Powder-Coated Steel Cover minimizes sound penetration to adjoining spaces

Specifications

- Frequency Response: 52Hz to 21kHz +/-3dB
- Impedance: 8 ohm nominal; 6 ohm minimum
- Recommended Amplifier Power: 10 to 100 Watts
- Frame Dimensions: 9 7/8 inches (25.1 cm)
- Hole cutout dimensions: 8 1/2 inches (21.6 cm)
- Depth behind ceiling (5/8" drywall): 2 1/8" (5.4 cm)

Warranty: Lifetime Limited

7" 2-WAY CEILING-MOUNT LOUDSPEAKERS

CM7MP

7" Two-Way Ceiling-Mount Multi-Purpose Loudspeaker with Pivoting Tweeter



Stock Number FG01656
 Packaged Individually with Round MicroThin™ Grille

Features

- Integrated woofer/baffle design delivers greater low frequency response by employing a 7" woofer where competitive models of the same outer size employ 6 1/2" woofers
- Glass fiber woofer cone is light, strong and well damped to provide "best in class" bass response
- 1" fluid-cooled UltraSilk® soft-dome tweeter provides for clear and detailed high frequency response
- Proprietary bridge-mounted tweeter-adjustment mechanism focuses the high frequency sound in any direction up to 20° without diffraction
- Magnetically attached, rust-resistant grille covers install quickly and provide a low profile look
- Weather resistant construction reduces installation limitations and provides unique solutions in moist environments or outdoors under eaves

Specifications

- Frequency Response: 55Hz to 21kHz +/-3dB
- Impedance: 8 ohm nominal; 6 ohm minimum
- Recommended Amplifier Power: 10 to 130 Watts
- Frame Dimensions: 9 7/8 inches (25.1 cm)
- Hole cutout dimensions: 8 1/2 inches (21.6 cm)
- Depth behind ceiling (5/8" drywall): 3 3/4" (9.5 cm)

Warranty: Lifetime Limited

CM7PR

7" 2-Way Left/Center/Right Ceiling-Mount Performance Loudspeaker

For advanced home theaters and primary listening rooms.



Stock Number FG01657
 Packaged Individually with Round MicroThin™ Grille

Features

- Integrated woofer/baffle design delivers greater low frequency response by employing a 7" woofer where competitive models of the same outer size employ 6 1/2" woofers
- Glass fiber woofer cone is extremely rigid to reduce breakup, lower distortion and provide enhanced bass response
- Butyl rubber surround damps resonance and provides exceptional durability
- 1" fluid-cooled Teteron® dome tweeter offers ultra-wide dispersion and silky-smooth high-frequency response
- Proprietary bridge-mounted tweeter-adjustment mechanism focuses the high frequency sound in any direction up to 20° without diffraction
- Magnetically attached, rust-resistant grille covers install quickly and provide a low profile look
- Weather resistant construction reduces installation limitations and provides unique solutions in moist environments or outdoors under eaves

Specifications

- Frequency Response: 52Hz to 21kHz +/-3dB
- Impedance: 8 ohm nominal; 6 ohm minimum
- Recommended Amplifier Power: 10 to 130 Watts
- Frame Dimensions: 9 7/8 inches (25.1 cm)
- Hole cutout dimensions: 8 1/2 inches (21.6 cm)
- Depth behind ceiling (5/8" drywall): 3 3/4" (9.5 cm)

Warranty: Lifetime Limited

7" 2-WAY CEILING-MOUNT LOUDSPEAKERS

CM7HD

7" Two-Way Loudspeaker with Pivoting Tweeter

For advanced home theaters and primary listening rooms



Stock Number FG01658
Packaged in Pairs with Round MicroThin™ Grilles

Features

- Integrated woofer/baffle design delivers greater low frequency response by employing a 7" woofer where competitive models of the same outer size employ 6 1/2" woofers
- Interlaced glass fiber cone is lightweight yet extremely rigid for deep, powerful bass response
- Butyl rubber surround damps resonance and provides exceptional durability
- 1" nano-coated IMPACT (Improved Aluminum Ceramic Technology) dome tweeter utilizes a vapor deposited coating to move any ringing frequencies outside the range of hearing for ultra-detailed high frequencies
- Proprietary bridge-mounted tweeter-adjustment mechanism focuses the high frequency sound in any direction up to 20° without diffraction
- 3 position tweeter level control provides for precise matching to room acoustics
- Magnetically attached, rust-resistant grille covers install quickly and provide a low profile look
- Weather resistant construction reduces installation limitations and provides unique solutions in moist environments or outdoors under eaves

Specifications

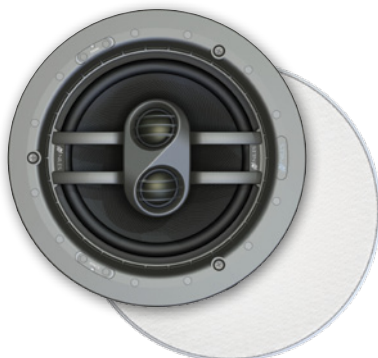
- Frequency Response: 48Hz to 21kHz +/-3dB
- Impedance: 8 ohm nominal; 6 ohm minimum
- Recommended Amplifier Power: 10 to 160 Watts
- Frame Dimensions: 9 7/8 inches (25.1 cm)
- Hole cutout dimensions: 8 1/2 inches (21.6 cm)
- Depth behind ceiling (5/8" drywall): 3 3/4" (9.5 cm)

Warranty: Lifetime Limited

CM7FX

7" 2-Way Surround Effects Ceiling-Mount Loudspeaker

For advanced home theaters and primary listening rooms



Stock Number FG01660
Packaged in Pairs with Round MicroThin™ Grilles

Features

- Integrated woofer/baffle design delivers greater low frequency response by employing a 7" woofer where competitive models of the same outer size employ 6 1/2" woofers
- Glass fiber woofer cone is extremely rigid to reduce breakup, lower distortion and provide enhanced bass response
- Butyl rubber cone surround damps resonance and provides exceptional durability
- Dual 1" pivoting fluid-cooled Teteron® dome tweeters offer ultra-wide dispersion and silky-smooth high-frequency response
- Bridge-mounted surround effects (FX) tweeter array directs the high-frequency sounds at opposing angles to create realistic surround sound effects
- Magnetically attached, rust-resistant grille covers install quickly and provide a low profile look
- Adjustable Dipole/Bipole and effects level controls provide for optimum room matching Patent-pending spring tensioned mounting clamps permit quick installation and compensate for uneven mounting surfaces and varied environmental conditions

Specifications

- Frequency Response: 52Hz to 21kHz +/-3dB
- Impedance: 8 ohm nominal; 6 ohm minimum
- Recommended Amplifier Power: 10 to 140 Watts
- Frame Dimensions: 9 7/8 inches (25.1 cm)
- Hole cutout dimensions: 8 1/2 inches (21.6 cm)
- Depth behind ceiling (5/8" drywall): 3 3/4" (9.5 cm)

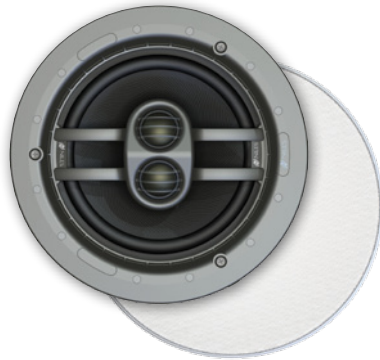
Warranty: Lifetime Limited

7" 2-WAY CEILING-MOUNT LOUDSPEAKERS

CM7SI

7" 2-Way Stereo Input Ceiling-Mount Loudspeaker

For single speaker stereo applications



Stock Number FG01659 Packaged Individually with Round MicroThin™ Grille

Features

- 7" glass fiber woofer cone with a curvilinear profile for smoother sound and less peaking at high frequencies
- Glass fiber dual voice coil woofer reproduces left and right channel inputs from a single speaker.
- High quality Butyl surround increases sensitivity and preserves durability
- Dual 1" fluid-cooled Teteron tweeters provide wide dispersion for clear and detailed high frequencies
- Bridge-mounted stereo imaging (Si) tweeter array directs the high-frequency sounds from both the left and right channels at opposing angles to preserve stereo separation
- Magnetically attached, rust-resistant grille covers install quickly and provide a low profile look
- Weather resistant construction reduces installation limitations and provides unique solutions in showers or outdoors under eaves
- Integrated baffle/frame assembly increases the cone area for deeper bass than competitive speakers of the same diameter
- Patent-pending spring tensioned mounting clamps permit quick installation and compensate for uneven mounting surfaces and varied environmental conditions

Specifications

- Frequency Response: 55Hz to 21kHz +/-3dB
- Impedance: 8 ohm nominal; 6 ohm minimum
- Recommended Amplifier Power: 10 to 130 Watts
- Frame Dimensions: 9 7/8 inches (25.1 cm)
- Hole cutout dimensions: 8 1/2 inches (21.6 cm)
- Depth behind ceiling (5/8" drywall): 3 3/4" (9.5 cm)

Warranty: Lifetime Limited

7" CEILING-MOUNT LOUDSPEAKER ACCESSORIES

SG7C

7" Square MicroThin™ Grilles

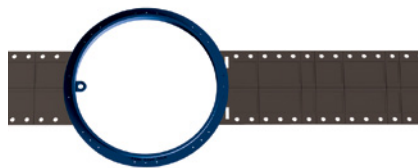


- Corrosion-resistant MicroThin™ grille material
- Can be painted to match room color
- Packaged in Pairs

Stock Number
FG01645

Master Carton
4 Pairs

NCB7C



- Arms with center marking lines to allow visual adjustment to stud
- Packaged in Pairs

Stock Number
FG01647

Master Carton
4 Pairs

8" 2-WAY CEILING-MOUNT LOUDSPEAKERS

CM8MP

8" 2-Way Ceiling-Mount Multi-Purpose Loudspeaker With Pivoting Tweeter



Stock Number FG01661
 Packaged in individually with Round MicroThin™ Grille

Features

- Integrated woofer/baffle design delivers greater low frequency response by employing a 8" woofer where competitive models of the same outer size employ 6 1/2" woofers
- Polypropylene cone is light, strong and well damped to provide "best in class" bass response
- Butyl rubber surround damps resonance and provides exceptional durability
- 1" fluid-cooled UltraSilk® soft-dome tweeter provides for clear and detailed high frequency response
- Proprietary bridge-mounted tweeter-adjustment mechanism focuses the high frequency sound in any direction up to 20° without diffraction
- Magnetically attached, rust-resistant grille covers install quickly and provide a low profile look
- Weather resistant construction reduces installation limitations and provides unique solutions in moist environments or outdoors under eaves

Specifications

- Frequency Response: 50Hz to 21kHz +/-3dB
- Impedance: 8 ohm nominal; 6 ohm minimum
- Recommended Amplifier Power: 10 to 140 Watts
- Frame Dimensions: 11 3/8 inches (28.9 cm)
- Hole cutout dimensions: 9 3/4 inches (24.8 cm)
- Depth behind ceiling (5/8" drywall): 4 1/8" (10.5 cm)

Warranty: Lifetime Limited

CM8PR

8" 2-Way Left/Center/Right Ceiling-Mount Loudspeaker

For advanced home theaters and primary listening rooms



Stock Number FG01662
 Packaged Individually with Round MicroThin™ Grille

Features

- Integrated woofer/baffle design delivers greater low frequency response by employing an 8" woofer where competitive models of the same outer size use smaller woofers.
- Glass fiber woofer cone is extremely rigid to reduce breakup, lower distortion and provide enhanced bass response
- Butyl rubber surround damps resonance and provides exceptional durability
- 1" fluid-cooled Teteron® dome tweeter offers enhanced dispersion and silky-smooth high frequency response
- Proprietary bridge-mounted tweeter pivot mechanism focuses the high frequency sound in any direction up to 20° without diffraction
- Magnetically attached, rust-resistant grille covers install quickly and provide a low profile look
- Weather resistant construction reduces installation limitations and provides unique solutions in moist environments like bathrooms or outdoors under eaves
- Patent-pending spring tensioned mounting clamps permit quick installation and compensate for uneven mounting surfaces and varied environmental conditions

Specifications

- Frequency response: 48Hz to 21kHz +/-3dB
- Impedance: 8 ohm nominal; 6 ohm minimum
- Recommended amplifier power: 10 to 140 watts
- Frame Dimensions: 11 3/8 inches (28.9 cm)
- Hole cutout dimensions: 9 3/4 inches (24.8 cm)
- Depth behind ceiling (5/8" drywall): 4 1/8" (10.5 cm)

Warranty: Lifetime Limited

8" 2-WAY CEILING-MOUNT LOUDSPEAKERS

CM8HD

8" 2-Way Left/Center/Right High Definition Ceiling-Mount Loudspeaker

For advanced home theaters and primary listening rooms



Stock Number FG01663
Packaged Individually with Round MicroThin™ Grille

Features

- 8" IMPACT (Improved Aluminum Ceramic Technology) woofer cone with curvilinear profile and extended pole provides natural, flat response
- 1" nano-coated IMPACT dome tweeter utilizes a vapor deposited coating to move any ringing frequencies outside the range of hearing for ultra-detailed high frequencies
- Butyl rubber surround damps resonance and provides exceptional durability
- Proprietary bridge-mounted tweeter pivot mechanism focuses the high frequency sound in any direction up to 20° without diffraction
- Three-position tweeter level control for precise matching to room acoustics
- Magnetically attached, rust-resistant grille covers install quickly and provide a low profile look
- Weather resistant construction reduces installation limitations and provides unique solutions in moist environments like bathrooms or outdoors under eaves patent-pending spring tensioned mounting clamps permit quick installation and compensate for uneven mounting surfaces and varied environmental conditions

Specifications

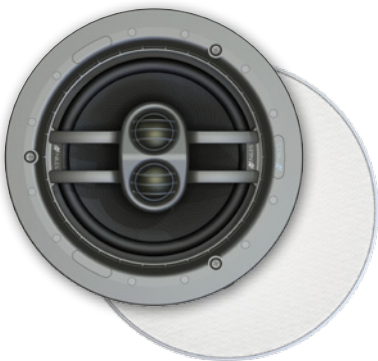
- Frequency Response: 48Hz to 21kHz +/-3dB
- Impedance: 8 ohm nominal; 6 ohm minimum
- Recommended Amplifier Power: 10 to 160 Watts
- Frame Dimensions: 11 3/8 inches (28.9 cm)
- Hole cutout dimensions: 9 3/4 inches (24.8 cm)
- Depth behind ceiling (5/8" drywall): 4 1/8" (10.5 cm)

Warranty: Lifetime Limited

CM8SI

8" 2-Way Stereo Input Ceiling-Mount Loudspeaker

For single speaker stereo applications



Stock Number FG01664
Packaged Individually with Round MicroThin™ Grille

Features

- 8" glass fiber woofer cone with a curvilinear profile for smoother sound and less peaking at high frequencies
- Dual 1" Teteron tweeters provide wide dispersion for clear and detailed high frequencies
- Bridge-mounted Stereo Imaging (SI) tweeter array directs the high frequency sounds from both the left and right channels at opposing angles to preserve stereo separation
- Magnetically attached, rust-resistant grille covers install quickly and provide a low profile look
- Integrated baffle/frame assembly increases the cone area for deeper bass than competitive speakers of the same diameter
- Patent-pending spring tensioned mounting clamps permit quick installation and compensate for uneven mounting surfaces and varied environmental conditions
- Weather-resistant construction enables installation in wet environments and outdoors under eaves

Specifications

- Recommended amplifier power: 10 - 130 watts
- Impedance: 8 ohm nominal; 6 ohm minimum
- Frequency response: 55 Hz to 21 kHz +/- -3 dB
- Voice coil size: 1.25"
- Frame Dimensions: 11 3/8 inches (28.9 cm)
- Hole cutout dimensions: 9 3/4 inches (24.8 cm)
- Depth behind ceiling (5/8" drywall): 4 1/8" (10.5 cm)

Warranty: Lifetime Limited

8" CEILING-MOUNT LOUDSPEAKER ACCESSORIES

SG8C

8" Square MicroThin™ Grilles



- Corrosion-resistant MicroThin™ grille material
- Can be painted to match room color
- Packaged in Pairs

Stock Number

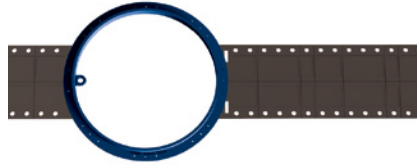
FG01646

Master Carton

4 Pairs

NCB8C

8" New Construction Bracket



- Arms with center marking lines to allow visual adjustment to stud
- Packaged in Pairs

Stock Number

FG01648

Master Carton

4 Pairs



SELECTION, PERFORMANCE, AND INSTALLABILITY

Niles In-Wall Loudspeakers Have It All

With 12 different models, each engineered to address a specific application; Niles has the right in-wall loudspeaker for any system you can install. Each one has different features and performance characteristics to satisfy varying conditions such as sound quality, placement, room size, or room acoustics.

For example, our exclusive tweeter housing ratchets in 1 mm increments to precisely direct the high frequencies into the listening area. Baffle mounted bass and treble tone controls let you compensate for

less than ideal room anomalies and speaker placement. Another installer-friendly touch is the standard snap-in loudspeaker baffle that saves time and facilitates quick service while maintaining an unbroken paint seal.

And don't forget the famous Niles Limited Lifetime Warranty. Our In-Wall Loudspeakers are so robust that when you install them, you know they'll stay installed—for years to come.



For application-specific solutions, easy installation, and legendary quality and reliability, look no further than Niles Audio. Our integrated woofer/baffle provides a deeper, richer bass than similarly sized competitor's models.

KEY FEATURES



ARCHITECTURALLY-FRIENDLY AESTHETICS

Snap-in loudspeaker baffles provide a seamless fit to the wall, simplifies painting, and allows easy removal of the baffle from the frame for servicing or upgrades, without disrupting the paint seal.



SUPERIOR SOUND QUALITY

Advanced driver materials, quality crossovers, and our rotating and pivoting tweeter work in concert to provide a listening experience that redefines the wall-mount loudspeaker category.



IMPEDANCE MANAGEMENT

Selectable 4 ohm or 8 ohm impedance switching enables you to optimize the design of your system.



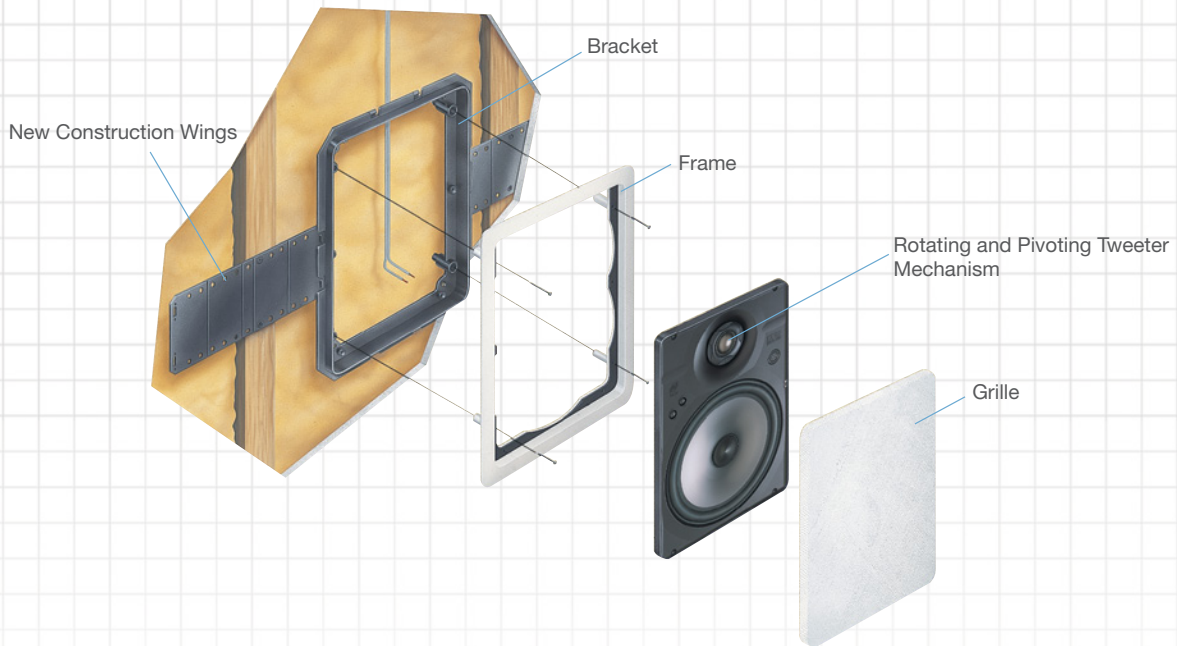
SOPHISTICATED MOTOR AND MAGNET DESIGN

Our design includes shorting rings, extended pole pieces, and machined top plates for deep bass response.



LIFETIME LIMITED WARRANTY

Our In-Wall Loudspeakers are so well made; we confidently back them up with a Lifetime Limited Warranty. With robust construction and bulletproof durability, you can expect fewer service calls—and that means more money in your pocket.



5" IN-WALL LOUDSPEAKERS

MP5

Multipurpose In-Wall High Loudspeaker; 5 1/4", 2-Way

For price sensitive and background music applications



Packaged in pairs

Model	Stock Number
MP5R*	FG00874
MP5**	FG00873

Overview

Niles Multipurpose In-Wall Loudspeakers are an excellent value with many applications throughout the home. A pivoting and rotating tweeter directs the high frequency sound towards the listening area.

Features

- 5-1/4" Talc-filled polypropylene cone woofer is light, strong and well damped to accommodate all types of program material
- Treated foam cone surround increases sensitivity and provides exceptional durability
- 3/4" fluid-cooled Kaladex dome tweeter provides ultra-wide dispersion for clear, detailed high frequencies
- Proprietary tweeter adjustment mechanism ratchets in 1mm increments and pivots for precise aiming of high frequencies

Specifications

- Recommended amplifier power: 5 – 60 watts
- Impedance: 8 ohms
- Frequency response: 75 Hz – 20 kHz +/-3 dB
- Sensitivity: 87 dB for 2.83V pink noise
- Frame dimensions: 7-1/8" x 9-7/8" (18.11 cm x 25.1 cm)
- Hole cutout dimension: 6-1/4" x 9" (15.88 cm x 22.86 cm)
- Depth behind wall (based on 1/2" drywall): 3-5/8" (9.22 cm)

Warranty: Lifetime Limited

Shipping weight: 7 lbs. (3.2 Kg)

* MP5R includes everything required for installation

** MP5 requires a 5 Series Bracket Kit for installation (FG00327, sold separately).

PR5

Performance In-Wall Loudspeaker; 5 1/4", 2-Way

Superb value and performance for a wide variety of applications



Packaged in pairs

Model	Stock Number
PR5R*	FG00878

Overview

Niles Performance In-Wall Loudspeakers are exceptionally durable and excel in a number of applications. A rotating tweeter directs sound towards the listening area, while baffle-mounted bass and treble controls simplify room and acoustics matching.

Features

- 5-1/4" Talc-filled polypropylene cone woofer is extremely rigid to reduce breakup and lower distortion
- Butyl rubber cone surround damps resonance and provides exceptional durability
- 3/4" fluid-cooled Kaladex dome tweeter provides ultra-wide dispersion for clear, detailed high frequencies
- Proprietary tweeter adjustment mechanism ratchets in 1mm increments and pivots for precise aiming of high frequencies
- Baffle-mounted bass and treble controls provide simple, accessible sound adjustment for room and acoustics matching

Specifications

- Impedance: 4 ohms or 8 ohms (selectable)
- Recommended amplifier power: 10 – 100 watts
- Frequency response: 70 Hz – 21 kHz +/-3 dB
- Sensitivity: 88 dB for 2.83V pink noise
- Frame dimensions: 7-1/8" X 9-7/8" (18.11 cm x 25.1 cm)
- Hole cutout dimension: 6-1/4" X 9" (15.88 cm x 22.86 cm)
- Depth behind wall (based on 1/2" drywall): 3-5/8" (9.22 cm)

Warranty: Lifetime Limited

Shipping weight: 10 lbs. (4.5 Kg)

* PR5R includes everything required for installation

** PR5 requires a 5 Series Bracket Kit for installation (FG00327, sold separately).



HD5

High Definition In-Wall Loudspeaker; 5 1/4", 2-Way

Provides superior sound quality and durability



Packaged in pairs

Model	Stock Number
HD5R*	FG00882
HD5**	FG00881

* HD5R includes everything required for installation

** HD5 requires a 5 Series Bracket Kit for installation (FG00327, sold separately).

Overview

Niles High Definition In-Wall Loudspeakers excel in any application, including home theater. A rotating tweeter directs sound towards the listening area, while baffle-mounted bass and treble controls simplify room and acoustics matching.

Features

- 5-1/4" injection-molded TCC™ (Talc, Carbon and Ceramic-filled) polypropylene woofer is extremely rigid to reduce breakup and lower distortion
- Butyl rubber surround damps resonance and provides exceptional durability
- High BL magnet structure with vented pole piece insures powerful bass response
- 1" Tri-laminate Teteron® dome tweeter with fluid cooling and ultra-wide dispersion provides clear and detailed high frequencies
- Proprietary tweeter adjustment mechanism ratchets in 1 mm increments and pivots for precise aiming of high frequencies
- Baffle-mounted bass and treble controls provide simple, accessible sound adjustment for room and acoustics matching
- Low diffraction MicroPerf™ aluminum grilles are acoustically transparent, paintable, and will not rust

Specifications

- Recommended amplifier power: 10 –100 watts
- Impedance: 6 ohms
- Frequency response: 60 Hz – 21 kHz +/-3 dB
- Sensitivity: 88 dB for 2.83V pink noise
- Frame dimensions: 7-1/8" x 9-7/8" (18.11 cm x 25.1 cm)
- Hole cutout dimension: 6-1/4" x 9" (15.88 cm x 22.86 cm)
- Depth behind wall (based on 1/2" drywall): 3-5/8" (9.22 cm)

Warranty: Lifetime Limited

Shipping weight: 9 lbs. (4.1 Kg)

6" IN-WALL LOUDSPEAKERS

MP6

In-Wall High Multipurpose Loudspeaker; 6 1/2", 2-Way

For price sensitive and background music applications



Packaged in pairs

Model	Stock Number
MP6R*	FG00876
MP6**	FG00875

Overview

Niles Multipurpose In-Wall Loudspeakers are an excellent value with many applications throughout the home. A pivoting and rotating tweeter directs the high frequency sound towards the listening area.

Features

- 6-1/2" Talc-filled polypropylene cone woofer is light, strong and well damped to accommodate all types of program material
- Treated foam cone surround increases sensitivity and provides exceptional durability
- 3/4" fluid-cooled Kaladex dome tweeter provides ultra-wide dispersion for clear, detailed high frequencies
- Proprietary tweeter adjustment mechanism ratchets in 1mm increments and pivots for precise aiming of high frequencies

Specifications

- Recommended amplifier power: 10 – 75 watts
- Impedance: 8 ohms
- Frequency response: 65 Hz – 20 kHz +/-3 dB
- Sensitivity: 88 dB for 2.83V pink noise
- Frame dimensions: 8-3/4" x 11-11/16" (22.23 cm x 29.69 cm)
- Hole cutout dimension: 7-5/8" x 10-5/8" (19.38 cm x 27.0 cm)
- Depth behind wall (based on 1/2" drywall): 3-5/8" (9.22 cm)

Warranty: Lifetime Limited

Shipping weight: 10 lbs. (4.5 Kg)

* MP6R includes everything required for installation
 ** MP6 requires a 6 Series Bracket Kit for installation (FG00320, sold separately).

PR6

Performance In-Wall Loudspeaker; 6 1/2", 2-Way

Superb value and performance for a wide variety of applications



Packaged in pairs

Model	Stock Number
PR6R*	FG00880
PR6**	FG00879

* PR6R includes everything required for installation
 ** PR6 requires a 6 Series Bracket Kit for installation (FG00320, sold separately)

Overview

Niles Performance In-Wall Loudspeakers are exceptionally durable and excel in a number of applications. A rotating tweeter directs sound towards the listening area, while baffle-mounted bass and treble controls simplify room and acoustics matching.

Features

- 6-1/2" Talc-filled polypropylene cone woofer is extremely rigid to reduce breakup and lower distortion
- Butyl rubber cone surround damps resonance and provides exceptional durability
- 3/4" fluid-cooled Kaladex dome tweeter provides ultra-wide dispersion for clear, detailed high frequencies
- Proprietary tweeter adjustment mechanism ratchets in 1mm increments and pivots for precise aiming of high frequencies

Specifications

- Impedance: 4 ohms or 8 ohms (selectable)
- Recommended amplifier power: 10 – 100 watts
- Frequency response: 60 Hz – 20 kHz +/-3 dB
- Sensitivity: 88 dB for 2.83V pink noise
- Frame dimensions: 8-3/4" X 11-11/16" (22.23 cm x 29.69 cm)
- Hole cutout dimension: 7-5/8" X 10-5/8" (19.38 cm x 27.0 cm)
- Depth behind wall (based on 1/2" drywall): 3-5/8" (9.22 cm)

Warranty: Lifetime Limited

Shipping weight: 10 lbs. (4.5 Kg)

HD6

In-Wall High Definition Loudspeaker; 6 1/2", 2-Way

Provides superior sound quality and durability



Packaged in pairs

Model	Stock Number
HD6R*	FG00884
HD6**	FG00883

* HD6R includes everything required for installation
 ** HD6 requires a 6 Series Bracket Kit for installation (FG00320, sold separately).

Overview

Niles High Definition In-Wall Loudspeakers excel in any application, including home theater. A rotating tweeter directs sound towards the listening area, while baffle-mounted bass and treble controls simplify room and acoustics matching.

Features

- 6-1/2" injection-molded TCC™ (Talc, Carbon and Ceramic-filled) polypropylene cone woofer is extremely rigid to reduce breakup and lower distortion
- Butyl rubber surround damps resonance and provides exceptional durability
- High BL magnet structure with vented pole piece insures powerful bass response
- 1" Tri-laminate Teteron® dome tweeter with fluid cooling and ultra-wide dispersion provides clear and detailed high frequencies
- Proprietary tweeter adjustment mechanism ratchets in 1 mm increments and pivots for precise aiming of high frequencies
- Baffle-mounted bass and treble controls provide simple, accessible sound adjustment for room and acoustics matching
- Low diffraction MicroPerf™ aluminum grilles are acoustically transparent, paintable, and will not rust

Specifications

- Recommended amplifier power: 10 –125 watts
- Impedance: 6 ohms
- Frequency response: 50 Hz – 21 kHz +/-3 dB
- Sensitivity: 89 dB for 2.83V pink noise
- Frame dimensions: 8-3/4" x11-11/16" (22.23 cm x 29.69 cm)
- Hole cutout dimension: 7-5/8" x 10-5/8" (19.38 cm x 27 cm)
- Depth behind wall (based on 1/2" drywall): 3-5/8" (9.22 cm)

Warranty: Lifetime Limited

Shipping weight: 12 lbs. (5.4 Kg)

8" IN-WALL LOUDSPEAKERS

HD8

High Definition In-Wall Loudspeaker; 8", 2-Way

Provides superior sound quality and durability



Packaged in pairs

Model	Stock Number
HD8R*	FG00886
HD8**	FG00885

* HD8R includes everything required for installation

** HD8 requires a 8 Series Bracket Kit for installation (FG00321, sold separately).

Overview

Niles High Definition In-Wall Loudspeakers excel in any application, including home theater. A rotating tweeter directs sound towards the listening area, while baffle-mounted bass and treble controls simplify room and acoustics matching.

Features

- 8" injection-molded TCC™ (Talc, Carbon and Ceramic-filled) polypropylene cone woofer is extremely rigid to reduce breakup and lower distortion
- Butyl rubber surround damps resonance and provides exceptional durability
- High BL magnet structure with vented pole piece insures powerful bass response
- 1" Tri-laminate Teteron® dome tweeter with fluid cooling and ultra-wide dispersion provides clear and detailed high frequencies
- Proprietary tweeter adjustment mechanism ratchets in 1 mm increments and pivots for precise aiming of high frequencies
- Baffle-mounted bass and treble controls provide simple, accessible sound adjustment for room and acoustics matching
- Low diffraction MicroPerf™ aluminum grilles are acoustically transparent, paintable, and will not rust

Specifications

- Recommended amplifier power: 10 –150 watts
- Impedance: 6 ohms
- Frequency response: 50 Hz – 21 kHz +/-3 dB
- Sensitivity: 89 dB for 2.83V pink noise
- Frame dimensions: 10-3/16" x14-1/4" (25.88 cm x 36.2 cm)
- Hole cutout dimension: 9-1/8" x 13-1/8" (23.19 cm x 33.35 cm)
- Depth behind wall (based on 1/2" drywall): 3-5/8" (9.22 cm)

Warranty: Lifetime Limited

Shipping weight: 17 lbs. (7.7 Kg)

PSW8

In-Wall Passive Subwoofer

Provides impressive bass response without adding any room clutter



PSW8 requires 8 Series Bracket Kit for installation. Use FG00321 (sold separately)

Packaged Individually

Stock Number
FG00894

Overview

Give your in-wall speaker system some impressive low-end punch, without adding a big box subwoofer on the floor. The PSW8 is totally adjustable to blend perfectly with any type or style of loudspeaker.

Features

- 8" Injection-molded TCC™ (Talc, Carbon, and Ceramic-filled) cone woofer is extremely rigid to reduce breakup and lower distortion, even under high power
- Butyl rubber cone surround damps resonance and provides exceptional durability
- High BL magnet structure with dual voice coils and vented pole piece ensures powerful bass response
- Inverted dust cap increases stiffness-to-mass ratio and reduces distortion
- Baffle-mounted low pass crossover control adjustable for 100 Hz or 140 Hz
- Baffle-mounted high pass crossover control adjustable for bypass or 120 Hz setting

Specifications

- Recommended amplifier power: 10 – 150 watts
- Impedance: 8 ohms single/stereo; 4 ohms with voice coils paralleled for full mono output
- Frequency response: 35 Hz – 140 Hz +/-3 dB
- Sensitivity: 89 dB for 2.83V pink noise
- Frame dimensions: 10-3/16" X 14-1/4" (25.88 cm x 36.2 cm)
- Hole cutout dimensions: 9-1/8" X 13-1/8" (23.19 cm x 33.35 cm)
- Depth behind wall (based on 1/2" drywall): 3-3/4" (9.53 cm)

Warranty: Lifetime Limited

Shipping weight: 10 lbs. (4.5 Kg)

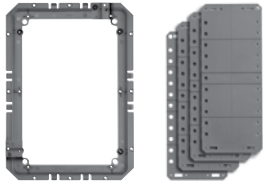


IN-WALL LOUDSPEAKER ACCESSORIES

8 Series Bracket

New Construction Bracket for 8 Series In-Wall Loudspeaker

For installing 8 Series In-Wall Loudspeaker in new construction applications



Stock Number

FG00321

Overview

A well-designed bracket with scored wings to ensure flexibility when placing between studs.

Features

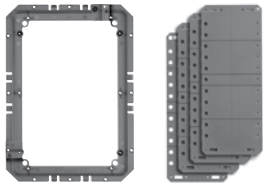
- Accommodates Niles 8 Series in-wall loudspeaker models
- Includes wings for new construction applications
- QuickSnap feature for faster installation in new construction
- Scored wings ensure flexibility in placement between wall studs
- Very thin wings minimize sheetrock bulge
- Wire ties on all four corners prevent the possibility of losing wires in walls
- Not easily damaged by common sheetrock tools
- Mates with matching frame to securely clamp sheetrock

Shipping weight: 3 lbs. (1.4 Kg)

6 Series Bracket

New Construction Bracket for 6 Series In-Wall Loudspeaker

For installing 6 Series In-Wall Loudspeaker in new construction applications



Stock Number

FG00320

Overview

A well-designed bracket with scored wings to ensure flexibility when placing between studs.

Features

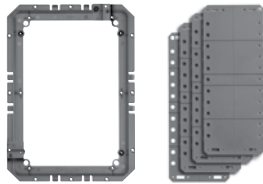
- Accommodates all Niles 6 Series in-wall loudspeaker models
- Includes wings for new construction applications
- QuickSnap feature for faster installation in new construction
- Scored wings ensure flexibility in placement between wall studs
- Very thin wings minimize sheetrock bulge
- Wire ties on all four corners prevent the possibility of losing wires in walls
- Not easily damaged by common sheetrock tools
- Mates with matching frame to securely clamp sheetrock

Shipping weight: 2 lbs. (1 Kg)

5 Series Bracket

New Construction Bracket for 5 Series In-Wall Loudspeaker

For installing 5 Series In-Wall Loudspeaker in new construction applications



Stock Number

FG00327

Overview

A well-designed bracket with scored wings to ensure flexibility when placing between studs.

Features

- Accommodates all Niles 5 Series in-wall loudspeaker models
- Includes wings for new construction applications
- QuickSnap feature for faster installation in new construction
- Scored wings ensure flexibility in placement between wall studs
- Very thin wings minimize sheetrock bulge
- Wire ties on all four corners prevent the possibility of losing wires in walls
- Not easily damaged by common sheetrock tools
- Mates with matching frame to securely clamp sheetrock

Shipping weight: 2 lbs. (1 Kg)

IN-WALL LOUDSPEAKER ACCESSORIES

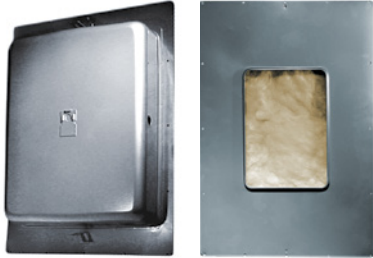
IE 6

Metal Enclosure for 6 Series In-Wall Loudspeakers

For enhancing bass response and meeting fire rating requirements

Stock Number

FG00941



Overview

A metal enclosure that can be installed in stud bays and ceiling tile systems (ceiling tile installation hardware included).

Features

- Exceeds one-hour fire rating requirements per the following standards: ASTM E 119, NFPA 251, UL 263 & 2043, ULC CAN/ULC – S101, and UBC 7-1
- Optimized enclosure volume enhances bass response and ensures consistent performance regardless of construction variations
- Includes all parts to install the enclosure in a wide range of ceiling tile systems
- Internal sound damping construction reduces sound transmitted to adjacent spaces by at least 10 dB
- Pre-drilled holes allow easy installation of the 3/8" conduit cable clamp provided with the enclosure
- Integral hanging tab for attachment of safety harness or ceiling tile wire hanger
- Mountable in walls or ceilings in 12", 16" or 24" stud bays made with 2" x 6" studs, at a minimum

Specifications

- Enclosure hole cut out dimensions: 8" x 11" (20.32 cm x 27.94 cm)
- Enclosure dimensions: 18" length x 14" wide x 3-1/2" deep (45.72 x 35.56 cm x 8.89 cm)
- Front plate dimensions: 23-3/4" length x 17" wide (60.32 cm x 43.18 cm)

Shipping weight: 16 lbs. (7.6 Kg)

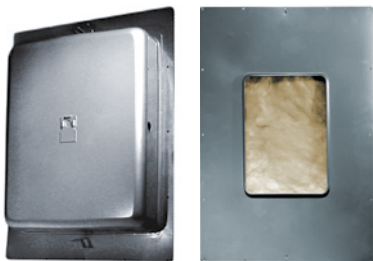
IE 5

Metal Enclosure for 5 Series In-Wall Loudspeakers

For enhancing bass response and meeting fire rating requirements

Stock Number

FG00940



Overview

A metal enclosure that can be installed in stud bays and ceiling tile systems (ceiling tile installation hardware included).

Features

- Exceeds one-hour fire rating requirements per the following standards: ASTM E 119, NFPA 251, UL 263 & 2043, ULC CAN/ULC – S101, and UBC 7-1
- Optimized enclosure volume enhances bass response and ensures consistent performance regardless of construction variations
- Includes all parts to install the enclosure in a wide range of ceiling tile systems
- Internal sound damping construction reduces sound transmitted to adjacent spaces by at least 10 dB
- Pre-drilled holes allow easy installation of the 3/8" conduit cable clamp provided with the enclosure
- Integral hanging tab for attachment of safety harness or ceiling tile wire hanger
- Mountable in walls or ceilings in 12", 16" or 24" stud bays made with 2" x 6" studs, at a minimum

Specifications

- Enclosure hole cut out dimensions: 6-5/8" x 9-1/2" (16.81 cm x 24.13 cm)
- Enclosure dimensions: 18" length x 14" wide x 3-1/2" deep (45.72 x 35.56 cm x 8.89 cm)
- Front plate dimensions: 23-3/4" length x 17" wide (60.32 cm x 43.18 cm)

Shipping weight: 16 lbs. (7.6 Kg)



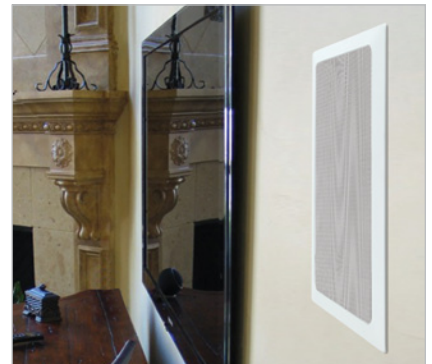
HOME THEATER NEVER SOUNDED SO GOOD

HD High Definition Loudspeakers

High definition television forever changed home theater video. HD High Definition Loudspeakers have done the same for home theater surround sound. Available in cabinet, in-wall, and ceiling-mount versions, these loudspeakers provide a powerful home theater experience that's right at home with any room's décor.

Each loudspeaker in the series uses our proprietary injection-molded TCC™ (Talc, Carbon, Ceramic-filled) woofer cones, tri-laminate Teteron®

tweeters, and are voice-matched so any combination of the three versions can be specified. So take the guesswork out of great home theater sound. With thousands already in use today throughout the world, Niles HD High Definition Loudspeakers are the complete solution for creating home theater magic for your customers.



For application-specific solutions, easy installation, and legendary quality and reliability, look no further than Niles Audio. Our integrated woofer/baffle provides a deeper, richer bass than similarly sized competitor's models.

KEY FEATURES



DEEP, LOW DISTORTION BASS

Our TCC™ (Talc, Carbon, Ceramic-filled) woofer cone exhibits the perfect balance of strength and rigidity to reduce cone breakup, resulting in lower distortion with tighter, cleaner bass response.



LONG-THROW VOICE COIL/MAGNET STRUCTURE

We've maximized woofer cone excursion to enhance low frequency response and dynamics.



SMOOTH TREBLE RESPONSE

Sophisticated fluid-cooled Teteron® dome tweeters deliver silky smooth response with ultra-wide dispersion characteristics.



HD HIGH DEFINITION VOICE MATCHING

Compatibility with all other Niles HD High Definition Loudspeakers is ensured, leaving you free to specify any combination of the three form factors: cabinet, in-wall, and ceiling-mount.

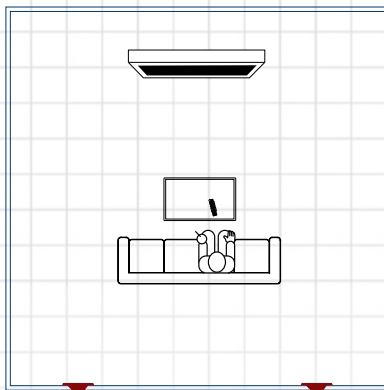


LIFETIME LIMITED WARRANTY

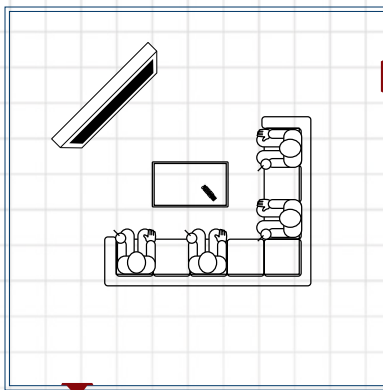
HD High Definition Loudspeakers are so well made; we confidently back them up with a Lifetime Limited Warranty. With robust construction and bulletproof durability, you can expect fewer service calls—and that means more money in your pocket.

HDFX LOUDSPEAKER PLACEMENT

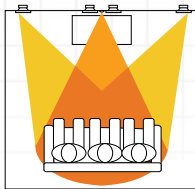
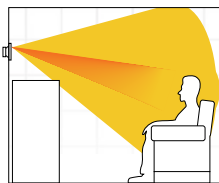
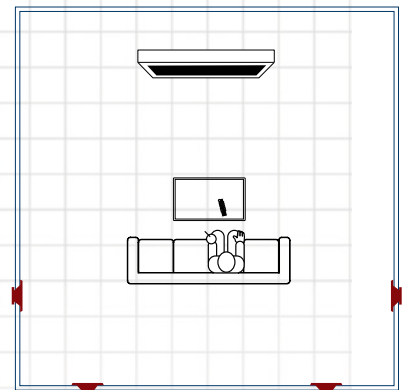
HDFX Loudspeakers are Placed Near Back Corner Walls of a Home Theater Room.



HDFX Loudspeakers are Placed Near Back Corner Walls of a Home Theater Room with an L-Shaped Sofa.



Two Pairs of HDFX Loudspeakers Reproduce Dolby EX® Surround Sound in a Home Theater Room.



Directed Sound Field Geometry™ (DSFG) steers the optimum response to the listener.

HD HIGH DEFINITION HOME THEATER LOUDSPEAKERS

HDLCR

In-Wall LCR High Definition Loudspeaker

For left/right and center channel use in high-performance home theater applications



Packaged Individually

Stock Number

FG01151

Overview

Create an incredible surround soundstage using loudspeakers that hide in the wall. We use our most advanced materials and engineering to make the HDLCR a true high definition product.

Features

- Dual 5-1/4" injection-molded TCC™ (Talc, Carbon and Ceramic-filled) polypropylene woofers are extremely rigid to reduce breakup and lower distortion
- Long-throw voice coil/magnet structure extends cone excursion limits to enhance low frequency response and dynamic impact
- 1" Tri-laminate Teteron® dome tweeter with fluid cooling and ultra-wide dispersion provides clear and detailed high frequencies
- Proprietary tweeter adjustment mechanism ratchets in 1 mm increments and pivots for precise aiming of high frequencies
- Baffle-mounted bass and treble controls provide simple, accessible sound adjustment for room and acoustics matching
- Paintable, textured, pearl white ABS frame with MicroPerf™ aluminum grille for a clean, unobtrusive installation

Specifications

- Recommended amplifier power: 10 – 150 watts
- Impedance: 4 ohms
- Frequency response: 65 Hz – 21 kHz +/-3 dB
- Sensitivity: 89 dB with 2.83V pink noise input, measured at 1 meter on axis
- Frame dimensions: 8-1/4" x 14-1/2" (20.85 cm x 36.83 cm)
- Hole cutout dimensions: 7-1/8" x 13-1/4" (18.11 cm x 33.66 cm)
- Depth behind wall (based on 1/2" drywall): 3-1/2" (8.89 cm)

Warranty: Lifetime Limited

Shipping weight: 7 lbs. (3.2 Kg)

HDLCR_{BX}

Bookshelf LCR High Definition Loudspeaker

For left/right and center channel use in high-performance home theater applications



Packaged Individually

Stock Number

FG01154

Overview

Create an incredible surround soundstage using loudspeakers that comfortably fit on a shelf. We use our most advanced materials and engineering to make the HDLCR_{BX} a true high definition product.

Features

- Dual 5-1/4" injection-molded TCC™ (Talc, Carbon and Ceramic-filled) polypropylene woofers are extremely rigid to reduce breakup and lower distortion
- Long-throw voice coil/magnet structure extends cone excursion limits to enhance low frequency response and dynamic impact
- 1" Tri-laminate Teteron® dome tweeter with fluid cooling and ultra-wide dispersion provides clear and detailed high frequencies
- Bass reflex design enhances low frequency response and improves dynamics
- Treble control provides precise high frequency tone matching in any room
- Midrange boost/Dialog enhance control enables improves movie dialog reproduction in center channel applications
- Sculpted MicroPerf™ aluminum grille is attractive and elegant in appearance

Specifications

- Recommended amplifier power: 10 – 150 watts
- Impedance: 4 ohms
- Frequency response: 65 Hz – 21 kHz +/-3 dB
- Sensitivity: 89 dB with 2.83V pink noise input, measured at 1 meter on axis
- Dimensions: 21" wide x 7-1/4" high x 9-3/4" deep (53.35 cm wide x 18.42 cm high x 24.77 cm deep)

Warranty: Lifetime Limited

Shipping weight: 24 lbs. (11 Kg)

HD HIGH DEFINITION HOME THEATER LOUDSPEAKERS

HDFX

In-Wall Side/Rear Channel Effects High Definition Loudspeaker

For surround rear effects in high-performance home theater applications



Voice matched to PHD wall-mount loudspeakers.

Packaged in pairs

Stock Number

FG01155

Overview

In-wall side/rear channel effects speaker that delivers superb surround sound performance and is voice-matched to blend with other Niles HD High Definition loudspeakers.

Features

- 5-1/4" injection-molded TCC™ (Talc, Carbon and Ceramic-filled) polypropylene woofer is extremely rigid to reduce breakup and lower distortion
- Long-throw voice coil/magnet structure extends cone excursion limits to enhance low frequency response and dynamic impact
- Dual 2-1/4" injection-molded TCC polypropylene full-range drivers fire to either side providing a uniform sound field, ideal for special effects
- 1" Tri-laminate Teteron® dome tweeter with fluid cooling and ultra-wide dispersion provides clear and detailed high frequencies
- Baffle-mounted dipole/bipole switch adjusts surround effects for either side or rear placement
- Baffle-mounted effects cut switch adjusts direct/diffuse sound field balance to provide realistic effects, regardless of room size
- Baffle-mounted bass and treble controls provide simple, accessible sound adjustment for room and acoustics matching
- Paintable, textured, pearl white ABS frame with MicroPerf™ aluminum grille for a clean, unobtrusive installation

Specifications

- Recommended amplifier power: 10 – 150 watts
- Impedance: 8 ohms
- Frequency response: 65 Hz - 21 kHz +/-3 dB
- Sensitivity: 88 dB with 2.83V pink noise input, measured at 1 meter on axis
- Frame dimensions: 8-1/4" x 14-1/2" (20.85 cm x 36.83 cm)
- Hole cutout dimensions: 7-1/8" x 13-1/4" (18.11 cm x 33.66 cm)
- Depth behind wall (based on 1/2" drywall): 3-1/2" (8.89 cm)

Warranty: Lifetime Limited

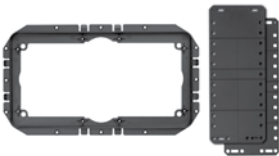
Shipping weight: 8 lbs. (3.6 Kg)

HD HIGH DEFINITION LOUDSPEAKER ACCESSORIES

LCR/FX BRACKET KIT

New Construction Bracket for HDLCR and HDFX In-Wall Loudspeakers

For use with the HDLCR and HDFX In-Wall Loudspeakers
Packaged Individually



Stock Number

FG01152

Overview

A well-designed bracket with scored wings to ensure flexibility when placing between studs.

Features

- Accommodates HDLCR and HDFX in-wall loudspeaker models
- Includes wings for new construction applications
- QuickSnap feature for faster installation in new construction
- Scored wings ensure flexibility in placement between wall studs
- Wire ties on all four corners prevent the possibility of losing wires in walls
- Not easily damaged by common sheetrock tools

Shipping weight: 2 lbs. (1 Kg)



PHD30
FG01286

PHD42
FG01287

THE ELEGANT FLAT SCREEN SOLUTION

PHD Plasma High Definition Loudspeakers

PHD Plasma High Definition Loudspeakers are specifically designed to mount on a wall and complement the size and look of plasma and LCD flat screen televisions. There are three different models; each boasting sophisticated design, spectacular sound, and appropriate sizing for many popular flat panel televisions.

These versatile loudspeakers can be installed for use as main, center, and effects in full home theater surround sound systems, or as simple left and right loudspeakers

for traditional television viewing. They mount quickly and securely to walls via the integrated bracket assemblies. With power handling from 10 to 250 watts, PHD Plasma High Definition Loudspeakers accommodate everything from basic to sophisticated home theater receivers. Step up to PHD quality—you'll never install anything else next to a flat-screen TV.



For application-specific solutions, easy installation, and legendary quality and reliability, look no further than Niles Audio. Our integrated woofer/baffle provides a deeper, richer bass than similarly sized models.

KEY FEATURES



EXTRUDED ALUMINUM ALLOY CABINETS

These handsome, acoustically inert cabinets prevent unwanted vibrations, ensuring clear, crisp sound.



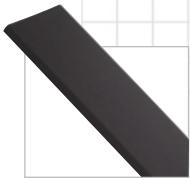
BASS REFLEX DESIGN

PHD Plasma High Definition Loudspeakers deliver accurate and powerful bass that enhances the entire home theater experience.



ROTATING AND PIVOTING POD

Adjustable, dispersion controlling midrange/tweeter pods enable precise imaging regardless of vertical or horizontal speaker placement.



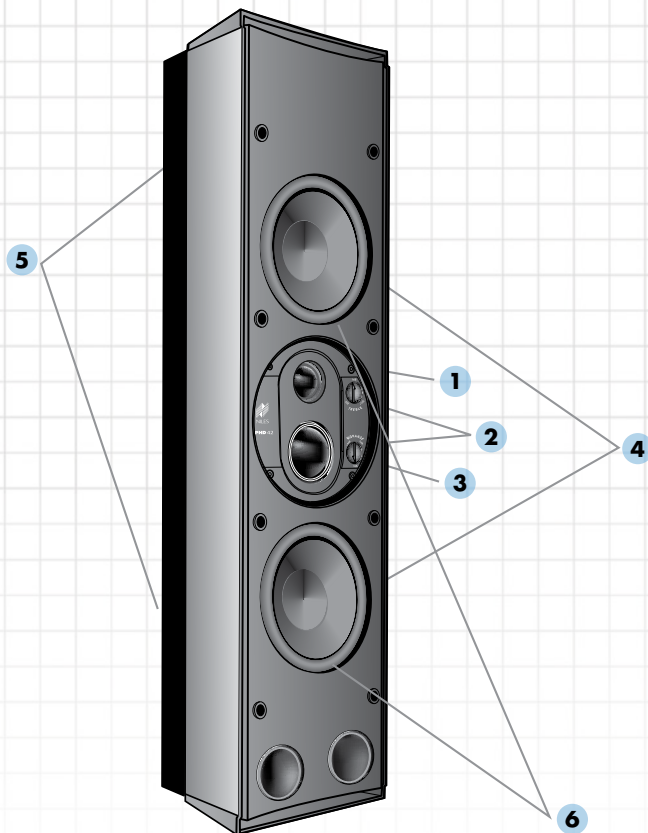
HD HIGH DEFINITION VOICE MATCHING

Compatibility with all other Niles HD High Definition Loudspeakers is ensured, leaving you free to specify any combination of the three form factors: cabinet, in-wall, and ceiling-mount.



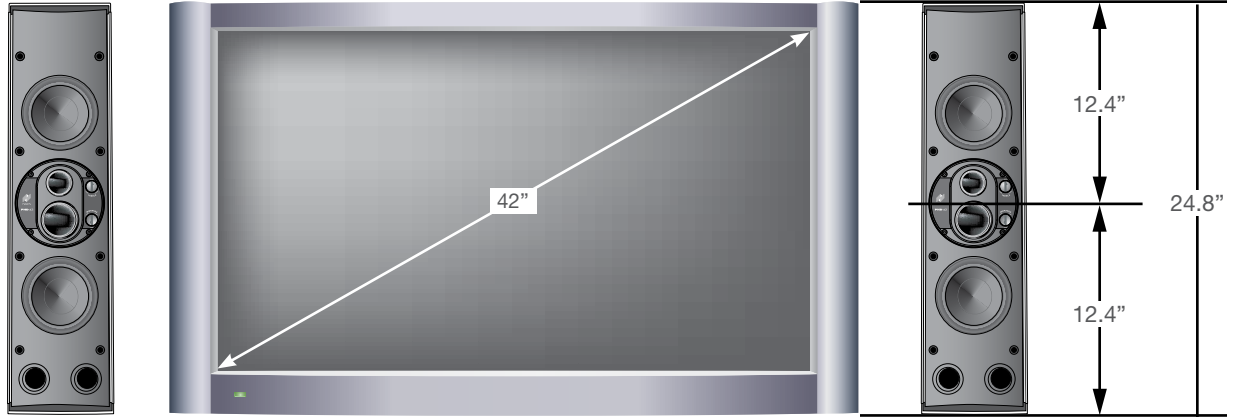
LIFETIME LIMITED WARRANTY

Our In-Wall Loudspeakers are so well made; we confidently back them up with a Lifetime Limited Warranty. With robust construction and bulletproof durability, you can expect fewer service calls—and that means more money in your pocket.

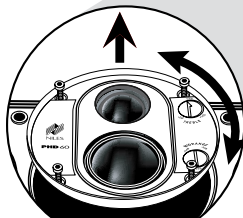
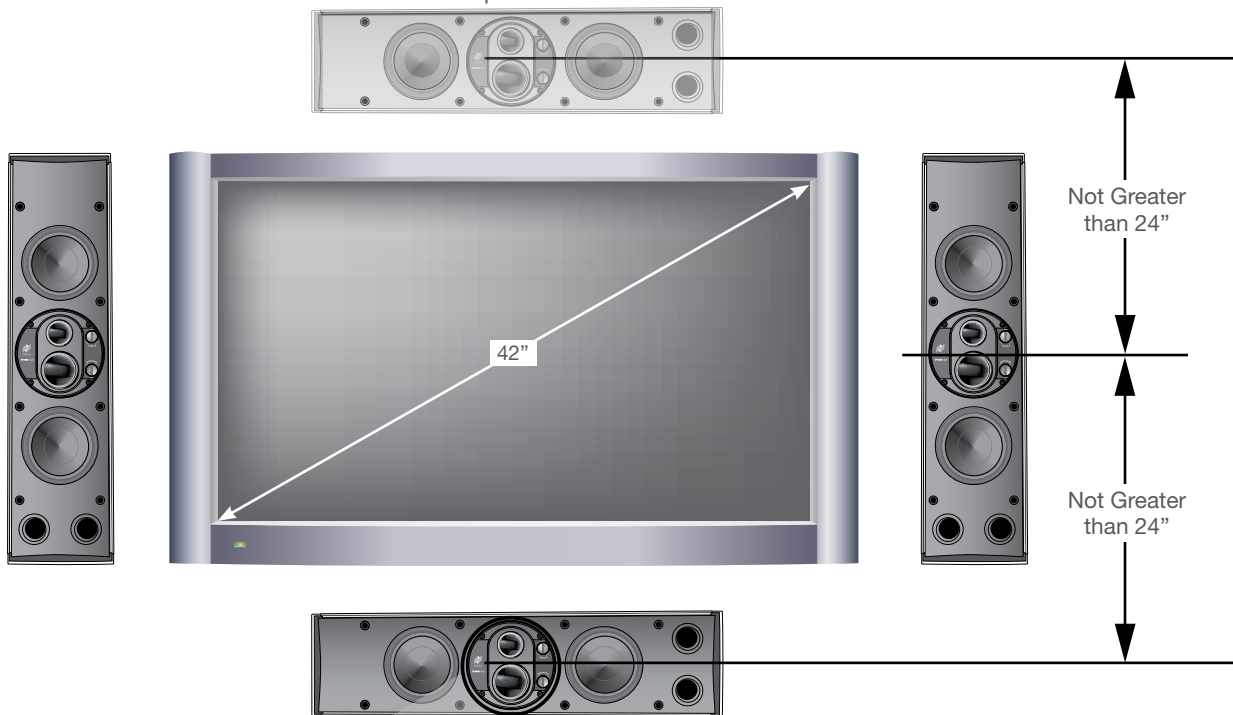


- 1** Rotating and Pivoting Pod
- 2** Fluid-Cooled Teteron® Dome Tweeters
- 3** Hyperbolic Dome Midrange Drivers
- 4** Injection-Molded TCC™ Woofer Cones
- 5** Integrated Wall-Mount Bracket
- 6** ConeForward™ Driver Design positions the cones to allow the sound to radiate freely into the room.

APPLICATIONS FOR PHD PLASMA HIGH DEFINITION WALL MOUNT LOUDSPEAKERS



Optional



Rotating and Pivoting Pod

PHD42

3-Way, High Definition Wall-Mount Loudspeaker

High quality sound solution for flat panel displays



Packaged Individually

Stock Number

FG01287

Overview

PHD Plasma High Definition Loudspeakers are specifically designed to mount on a wall and complement the size and look of plasma and LCD flat panel displays.

Features

- Cone Forward™ design positions the woofer cone at the front of the baffle for natural sounding bass and clear, open midrange
- Dual 5-1/4" injection-molded TCC™ (talc, carbon, and ceramic-filled) polypropylene woofers offer extreme rigidity to reduce breakup and lower distortion
- 1-1/2" Teteron® hyperbolic dome midrange driver is fluid cooled and provides high sound pressure levels
- 1" Teteron® dome tweeter is fluid cooled and delivers ultra-wide dispersion to reproduce clear and detailed high frequencies
- Bass-reflex design enhances low frequency response and dynamic impact
- Symmetrical driver configuration offers effective dispersion control for precise imaging and accommodates vertical or horizontal installations
- Rigid extruded aluminum enclosure delivers accurate bass response with low distortion
- Variable (+3 dB to -3 dB) midrange and treble controls are adjustable from the front baffle, enabling fine tuning after installation
- Contemporary finish matches popular flat panel displays
- Integrated wall mount bracket makes installation quick and easy

Specifications

- Recommended amplifier power: 10 – 200 watts
- Impedance: 4 ohms
- Frequency response: 63 Hz – 21 kHz +/-3dB
- Sensitivity: 89 dB for 2.83V pink noise input, measured at 1 meter on axis
- Dimensions (including wall bracket): 6-3/16" wide x 24-13/16" high X 5-5/8" deep (15.7 cm wide x 63.99 cm high x 14.22 cm deep)

Warranty: Lifetime Limited

Shipping weight: 30 lbs. (13.6 Kg)

PHD30

2-Way, High Definition Wall-Mount Loudspeaker

High quality sound solution for flat panel displays



Packaged Individually

Stock Number

FG01286

Overview

PHD Plasma High Definition Loudspeakers are specifically designed to mount on a wall and complement the size and look of plasma and LCD flat panel displays.

Features

- Cone Forward™ design positions the woofer cone at the front of the baffle for natural sounding bass and clear, open midrange
- Dual 5-1/4" injection-molded TCC™ (talc, carbon, and ceramic-filled) polypropylene woofers offer extreme rigidity to reduce breakup and lower distortion
- 1" Teteron® dome tweeter is fluid cooled and delivers ultra-wide dispersion to reproduce clear and detailed high frequencies
- Bass-reflex design enhances low frequency response and dynamic impact
- Symmetrical driver configuration offers effective dispersion control for precise imaging and accommodates vertical or horizontal installations
- Rigid extruded aluminum enclosure delivers accurate bass response with low distortion
- Contemporary finish matches popular flat panel displays
- Integrated wall mount bracket makes installation quick and easy

Specifications

- Recommended amplifier power: 10 – 150 watts
- Impedance: 4 ohms
- Frequency response: 70 Hz – 21 kHz +/-3dB
- Sensitivity: 88 dB for 2.83V pink noise input, measured at 1 meter on axis
- Dimensions (including wall bracket): 19-5/8" wide x 24-13/16" high X 5-5/8" deep (15.7 cm wide x 63.99 cm high x 14.22 cm deep)

Warranty: Lifetime Limited

Shipping weight: 20 lbs. (9 Kg)

STAGE FRONT

HOME THEATER SOLUTIONS®

LIFETIME
LIMITED WARRANTY



Special dealer
authorization
required

PRO770FX shown with
optional cloth grille set

STARS OF STAGE AND SCREEN

StageFront Home Theater Loudspeakers

In creating StageFront loudspeakers, Niles invigorated home theater with the same passion and application-specific design philosophy that made us the leader in distributed audio. To accomplish this, we created both in-wall and cabinet loudspeakers that provide custom installation professionals the performance and features needed to satisfy demanding home theater enthusiasts.

With sound dispersion control features such as 12V trigger activated bipole/dipole switching on the surround effects loudspeakers, and pivoting midrange/tweeter pods on

many other models, you can install StageFront Loudspeakers knowing that they will provide accurate imaging and realistic surround sound. Even the cross-braced cabinets contribute to the remarkable performance. With high-tech drivers that feature cast baskets, carbon fiber woofer cones and Teteron® tweeters, every system you install will please your clients, treating them with sound quality and dynamics that are every bit as exciting as that found in the best movie houses.



For application-specific solutions, easy installation, and legendary quality and reliability, look no further than Niles Audio. Our integrated woofer/baffle provides a deeper, richer bass than similarly sized models.

KEY FEATURES



CABINET AND IN-WALL VERSIONS

Select the form factor that best suits your installation, or combine the two for a truly custom solution.



SUPERIOR SOUND QUALITY

Interlaced Carbon Fiber or TCC™ (Talc, Carbon, and Ceramic-Filled) woofers combined with fluid-cooled Teteron® dome tweeters and midranges deliver smooth, full-range response with ultra-wide dispersion characteristics.



2007 Excite award winner



ADJUSTABLE CAST ALUMINUM MIDRANGE/TWEETER POD

Adjustable, dispersion controlling midrange/tweeter pods enable precise imaging regardless of vertical or horizontal speaker placement.



CES Innovations Design & Engineering Award



12V CONTROLLED DIPOLE/BIPOLE RELAY

Automate surround sound effects for your customers.



Electronic House Product of the Year



LIFETIME LIMITED WARRANTY

Our In-Wall Loudspeakers are so well made; we confidently back them up with a Lifetime Limited Warranty. With robust construction and bulletproof durability, you can expect fewer service calls—and that means more money in your pocket.



- 1 Interlaced Carbon Fiber and TCC™ (Talc, Carbon, and Ceramic-Filled) Woofers
- 2 Fluid-Cooled Teteron® Dome Tweeters
- 3 Advanced Design Midrange Drivers
- 4 Adjustable Cast Aluminum Midrange/Tweeter Pod
- 5 Bi-Amp and Bi-Wire Capabilities
- 6 12V Controlled Dipole/Bipole Relay
- 7 Cross-Braced Cabinets

PROFESSIONAL CABINET HOME THEATER LOUDSPEAKERS

PRO1770LCR

Professional-Quality Compact Cabinet Left/Center/Right Channel Loudspeaker

For high-performance left/center/right channel home theater applications



Packaged Individually
Stock Number
 FG01335

Overview

Professional-quality StageFront loudspeakers utilize advanced engineering concepts and superior components to recreate the dynamics and power of great home theater.

Features

- 7" high power handling interlaced carbon-fiber woofer with butyl rubber surround provides dynamic theater-quality sound at sustained high-power output levels
- 1" fluid-cooled Teteron® dome tweeter delivers ultra-wide dispersion and silky-smooth high-frequency response
- 1-1/2" fluid-cooled Teteron® dome midrange for smooth, detailed dialog
- Adjustable cast aluminum, fully-enclosed dispersion-controlling, midrange/tweeter pod enables precise imaging regardless of placement and accommodates vertical or horizontal installations
- Variable (+/-3dB) midrange and treble controls enable fine-tuning after installation
- Cross-braced cabinet provides the ultimate in rigidity and sound clarity
- Bi-amp and bi-wire capabilities optimize tonal balance and enhance dynamic range
- Gold-plated input terminals accept 12-gauge wire and ensure a positive connection

Specifications

- Frequency response: 70 Hz – 20 kHz +/-3 dB
- Sensitivity: 88 dB (2.83V@1 meter)
- Recommended amplifier power: 20 - 150 watts
- Impedance: 6 ohm nominal; 3.2 ohm minimum
- Dimensions (without grille): 8-13/16" wide x 14-9/16" high x 12-7/16" deep (22.35 cm wide x 37.08 cm high x 31.49 cm deep)

Warranty: Lifetime Limited

Shipping weight: 24 lbs. (11 Kg)



PRO2770LCR

Professional-Quality Cabinet Left/Center/Right Channel Loudspeaker

For high-performance left/center/right channel home theater application



Packaged Individually
Stock Number
 FG01336

Overview

Professional-quality StageFront loudspeakers utilize advanced engineering concepts and superior components to recreate the dynamics and power of great home theater.

Features

- Dual 7" high power handling interlaced carbon-fiber woofer with butyl rubber surround provides dynamic theater-quality sound at sustained high-power output levels
- 1" fluid-cooled Teteron® dome tweeter delivers ultra-wide dispersion and silky-smooth high-frequency response
- 1-1/2" fluid-cooled Teteron® dome midrange for smooth, detailed dialog
- Adjustable cast aluminum, fully-enclosed dispersion-controlling, midrange/tweeter pod enables precise imaging regardless of placement and accommodates vertical or horizontal installations
- Variable (+/-3dB) midrange and treble controls enable fine-tuning after installation
- Cross-braced cabinet provides the ultimate in rigidity and sound clarity
- Bi-amp and bi-wire capabilities optimize tonal balance and enhance dynamic range
- Gold-plated input terminals accept 12-gauge wire and ensure a positive connection

Specifications

- Frequency response: 60 Hz – 20 kHz +/-3 dB
- Sensitivity: 89 dB (2.83V@1 meter)
- Recommended amplifier power: 20 - 150 watts
- Impedance: 6 ohm nominal; 3.2 ohm minimum
- Dimensions (without grille): 14-9/16" wide x 14-9/16" high x 12" deep (37.08 cm wide x 37.08 cm high x 30.48 cm deep)

Warranty: Lifetime Limited

Shipping weight: 36 lbs (16.3 Kg)



PRO770FX

Professional-Quality Cabinet Surround Effects Loudspeaker

For high-performance surround effects home theater applications



Packaged Individually
Stock Number
 FG01337

Overview

Professional-quality StageFront loudspeakers utilize advanced engineering concepts and superior components to recreate the dynamics and power of great home theater.

Features

- Forward-firing 7" high power handling interlaced carbon-fiber woofer with butyl rubber surround provides dynamic theater-quality sound at sustained high-power output levels
- Forward-firing 1-1/2" fluid-cooled Teteron® dome midrange and 1" fluid cooled Teteron® dome tweeter are mounted in an adjustable cast aluminum, fully-enclosed dispersion-controlling, midrange/tweeter pod for precise imaging
- Dual side-firing 87 mm carbon-fiber midrange drivers with dual 1" Teteron® dome tweeters provide diffuse sound fields for optimum surround effects
- 12V-controlled dipole/bipole relay accommodates automated DVD-Audio or Dolby® surround sound effects
- Front mounted dipole/bipole switch and effects level control enable fine-tuning after installation
- Cross-braced cabinet provides the ultimate in rigidity and sound clarity
- Gold-plated input terminals accept 12-gauge wire and ensure a positive connection
- Wall mounting bracket and template included

Specifications

- Frequency response: 80 Hz – 20 kHz +/-3 dB
- Sensitivity: 88 dB (2.83V@1 meter)
- Recommended amplifier power: 20 - 150 watts
- Impedance: 6 ohm nominal; 3.2 ohm minimum
- Dimensions (without grilles): 12-34" wide x 16" high x 4-3/4" deep (44.20 cm wide x 45.72 cm high x 14.73 cm deep)
- Dimensions (with grilles and bracket): 19-9/16" wide x 18" high x 7-11/16" deep (49.78 cm wide x 45.72 cm high x 19.56 cm deep)

Warranty: Lifetime Limited Shipping weight: 41 lbs (18.6 Kg)



PRO1870LCR

Professional-Quality Cabinet Left/Center/Right Channel Loudspeaker

For high-performance left/center/right channel home theater applications



Packaged Individually
Stock Number
 FG01135

Overview

Professional-quality StageFront loudspeakers utilize advanced engineering concepts and superior components to recreate the dynamics and power of great home theater.

Features

- 8" high power handling interlaced carbon-fiber woofer with butyl rubber surround provides dynamic theater-quality sound at sustained high-power output levels
- 1" fluid-cooled Teteron® dome tweeter delivers ultra-wide dispersion and silky-smooth high-frequency response
- 4" fluid-cooled carbon cone midrange with neodymium motor for smooth, detailed dialog
- Adjustable cast aluminum, fully-enclosed dispersion-controlling, midrange/tweeter pod enables precise imaging regardless of placement and accommodates vertical or horizontal installations
- Midrange, tweeter, pod level and boundary compensation controls enable precise matching to room acoustics
- Cross-braced cabinet provides the ultimate in rigidity and sound clarity
- Bi-amp and bi-wire capabilities optimize tonal balance and enhance dynamic range
- Gold-plated input terminals accept 12-gauge wire and ensure a positive connection

Specifications

- Frequency response: 60 Hz – 20 kHz +/-3 dB
- Sensitivity: 90 dB (2.83V@1 meter)
- Recommended amplifier power: 20 - 200 watts
- Impedance: 6 ohm nominal; 3.2 ohm minimum
- Dimensions (without grille): 11" wide x 17-1/2" high x 15" deep (27.94 cm wide x 44.45 cm high x 38.1 cm deep)

Warranty: Lifetime Limited Shipping weight: 41 lbs (18.6 Kg)



PROFESSIONAL CABINET HOME THEATER LOUDSPEAKERS

PRO2870LCR

Professional-Quality Cabinet Left/Center/Right Channel Loudspeaker

For high-performance left/center/right channel home theater applications



Packaged Individually

Stock Number

FG01136

Overview

Professional-quality StageFront loudspeakers utilize advanced engineering concepts and superior components to recreate the dynamics and power of great home theater.

Features

- Dual 8" high power handling interlaced carbon-fiber woofer with butyl rubber surround provides dynamic theater-quality sound at sustained high-power output levels
- 1" fluid-cooled Teteron® dome tweeter delivers ultra-wide dispersion and silky-smooth high-frequency response
- 4" fluid-cooled carbon cone midrange with neodymium motor for smooth, detailed dialog
- Adjustable cast aluminum, fully-enclosed dispersion-controlling, midrange/tweeter pod enables precise imaging regardless of placement and accommodates vertical or horizontal installations
- Midrange, tweeter, pod level and boundary compensation controls enable precise matching to room acoustics
- Cross-braced cabinet provides the ultimate in rigidity and sound clarity
- Bi-amp and bi-wire capabilities optimize tonal balance and enhance dynamic range
- Gold-plated input terminals accept 12-gauge wire and ensure a positive connection

Specifications

- Frequency response: 55 Hz – 20 kHz +/-3 dB
- Sensitivity: 91 dB (2.83V@1 meter)
- Recommended amplifier power: 20 - 200 watts
- Impedance: 6 ohm nominal; 3.2 ohm minimum
- Dimensions (without grille): 17-1/2" wide x 19-1/16" high x 15" deep (44.45 cm wide x 48.51 cm high x 38.1 cm deep)

Warranty: Lifetime Limited

Shipping weight: 57 lbs (26 Kg)



PRO870FX

Professional-Quality Cabinet Surround Effects Loudspeaker

For high-performance surround effects home theater applications



Packaged Individually

Stock Number

FG01137

Overview

Professional-quality StageFront loudspeakers utilize advanced engineering concepts and superior components to recreate the dynamics and power of great home theater.

Features

- Forward-firing 8" high power handling interlaced carbon-fiber woofer with butyl rubber surround provides dynamic theater-quality sound at sustained high-power output levels
- Forward-firing adjustable cast aluminum, fully-enclosed dispersion-controlling, midrange/tweeter pod with 4" carbon-fiber midrange and 1" horn-loaded Teteron® dome tweeter enables precise imaging regardless of placement
- Dual side-firing 4" carbon-fiber midrange drivers with neodymium magnets and dual 1" Teteron® dome tweeters provide diffuse sound fields for optimum surround effects
- 12V-controlled dipole/bipole relay accommodates automated DVD-Audio or Dolby® surround sound effects
- Front mounted dipole/bipole switch and effects level control enable fine-tuning after installation
- Cross-braced cabinet provides the ultimate in rigidity and sound clarity
- Gold-plated input terminals accept 12-gauge wire and ensure a positive connection
- Wall mounting bracket and template included

Specifications

- Frequency response: 70 Hz – 20 kHz +/-3 dB
- Sensitivity: 90 dB (2.83V@1 meter)
- Recommended amplifier power: 20 - 200 watts
- Impedance: 6 ohm nominal; 3.2 ohm minimum
- Dimensions (without grilles and bracket): 17-7/16" wide x 18" high x 5-13/16" deep (44.20 cm wide x 45.72 cm high x 14.73 cm deep)
- Dimensions (with grilles and bracket): 19-9/16" wide x 18" high x 7-11/16" deep (49.78 cm wide x 45.72 cm high x 19.56 cm deep)

Warranty: Lifetime Limited

Shipping weight: 62 lbs (28 Kg)



PROFESSIONAL CABINET HOME THEATER LOUDSPEAKERS

PRO15SW

Professional-Quality High-Power Home Theater Subwoofer

For high-performance subwoofer home theater applications



Packaged Individually
Stock Number
 FG01138

Overview

Professional-quality StageFront loudspeakers utilize advanced engineering concepts and superior components to recreate the dynamics and power of great home theater.

Features

- 15" interlaced carbon-fiber woofer with cast aluminum frame and butyl rubber surround provides deep authoritative bass at sustained output levels
- 1000-watt digital amplifier provides prodigious power for dynamic peaks and extended low frequency response
- Gold-plated left, right, and LFE inputs
- Cascade line-level outputs for additional subwoofers or returning signals to processors/receivers
- Front mounted level, low pass and phase controls for precise system and room matching
- Triggered Music or Movie Modes enable customized settings for automated DVD-Audio or Dolby® surround sound effects
- 12V or music sense automatic turn-on
- 12V cascade output for triggering additional subwoofers
- Cross-braced cabinet provides the ultimate in rigidity and sound clarity

Specifications

- Amplifier output power: 1000 watts
- Frequency response: 25 Hz – 120 Hz +/-3 dB
- Dimensions (without grille): 17-1/2" wide x 25" high x 22-13/16" deep (19.05 cm wide x 63.5 cm high x 57.91 cm deep)
- Dimensions (with optional grille): 17-1/2" wide x 25" high x 24-1/4" deep (19.05 cm wide x 63.5 cm high x 61.6 cm deep)

Warranty: Lifetime Limited

Shipping weight: 111 lbs (50.5 Kg)



GRILLE ACCESSORIES FOR CABINET HOME THEATER LOUDSPEAKERS

PRO1770 GRILLE

Fabric Wrapped Grille Accessory

Used with the PRO1770LCR loudspeaker



Packaged Individually
Stock Number
 FG01516

Overview

An alternate grille treatment for the StageFront PRO1770LCR loudspeaker providing greater flexibility and customization

Features

- Acoustically transparent black fabric mounted on a sturdy wooden frame provides classic, subtle appearance
- Steel studs ensure a precise, snug fit
- No tools required for installation
- Fits one PRO1770LCR

Specifications

- Dimensions: 8" wide x 14.4" high x .9" deep (20.3 cm wide x 36.6 cm high x 2.3 cm deep)

Warranty: Lifetime Limited

Shipping weight: 1.2 lbs (.5 Kg)

GRILLE ACCESSORIES FOR CABINET HOME THEATER LOUDSPEAKERS

PRO2770 GRILLE

Fabric Wrapped Grille Accessory

Used with the PRO2770LCR loudspeaker



Packaged Individually
Stock Number
 FG01517

Overview

An alternate grille treatment for the StageFront PRO2770LCR loudspeaker providing greater flexibility and customization

Features

- Acoustically transparent black fabric mounted on a sturdy wooden frame provides classic, subtle appearance
- Steel studs ensure a precise, snug fit
- No tools required for installation
- Fits one PRO2770LCR

Specifications

- Dimensions: 13.8" wide x 14.4" high x .9" deep
 (35 cm wide x 36.6 cm high x 2.3 cm deep)

Warranty: Lifetime Limited

Shipping weight: 1.3 lbs (.5 Kg)

PRO770FX GRILLE SET

Fabric Wrapped Grille Accessory

Used with the PRO770FX loudspeaker



Packaged Individually
Stock Number
 FG01518

Overview

An alternate three-grille set for the StageFront PRO770FX loudspeaker providing greater flexibility and customization

Features

- Each set includes three grilles: one forward-facing and two side
- Acoustically transparent black fabric mounted on a sturdy wooden frame provides classic, subtle appearance
- Steel studs ensure a precise, snug fit
- No tools required for installation
- Fits one PRO770FX

Specifications

- Dimensions (forward-facing grille): 7.1" wide x 15.7" high x .9" deep
 (18 cm wide x 40 cm high x 2.3 cm deep)
- Dimensions (side grilles): 4.7" wide x 15.7" high x .9" deep
 (12 cm wide x 40 cm high x 2.3 cm deep)

Warranty: Lifetime Limited

Shipping weight: 3.2 lbs (1.5 Kg)

GRILLE ACCESSORIES FOR CABINET HOME THEATER LOUDSPEAKERS

PRO1870 GRILLE

Fabric Wrapped Grille Accessory

Used with the PRO1870LCR loudspeaker



Packaged Individually

Stock Number

FG01512

Overview

An alternate grille treatment for the StageFront PRO1870LCR loudspeaker providing greater flexibility and customization

Features

- Acoustically transparent black fabric mounted on a sturdy wooden frame provides classic, subtle appearance
- Steel studs ensure a precise, snug fit
- No tools required for installation
- Fits one PRO1870LCR

Specifications

- Dimensions: 10.2" wide x 17.7" high x 1.4" deep
(26 cm wide x 45 cm high x 3.6 cm deep)

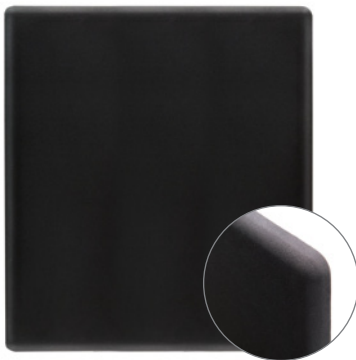
Warranty: Lifetime Limited

Shipping weight: 2.2 lbs (1 Kg)

PRO2870 GRILLE

Fabric Wrapped Grille Accessory

Used with the PRO2870LCR loudspeaker



Packaged Individually

Stock Number

FG01513

Overview

An alternate grille treatment for the StageFront PRO2770LCR loudspeaker providing greater flexibility and customization

Features

- Acoustically transparent black fabric mounted on a sturdy wooden frame provides classic, subtle appearance
- Steel studs ensure a precise, snug fit
- No tools required for installation
- Fits one PRO2870LCR

Specifications

- Dimensions: 16.7" wide x 18.9" high x 1.4" deep
(42.4 cm wide x 48 cm high x 3.6 cm deep)

Warranty: Lifetime Limited

Shipping weight: 2.5 lbs (1.2 Kg)

GRILLE ACCESSORIES FOR CABINET HOME THEATER LOUDSPEAKERS

PRO15SW GRILLE

Fabric Wrapped Grille Accessory

Used with the PRO15SW subwoofer



Packaged Individually

Stock Number

FG01515

Overview

An alternate grille treatment for the StageFront PRO15SW subwoofer providing greater flexibility and customization

Features

- Acoustically transparent black fabric mounted on a sturdy wooden frame provides classic, subtle appearance
- Steel studs ensure a precise, snug fit
- No tools required for installation
- Fits one PRO15SW

Specifications

- Dimensions: 16.7" wide x 20.2" high x 1.1" deep
(42.4 cm wide x 51.3 cm high x 2.8 cm deep)

Warranty: Lifetime Limited

Shipping weight: 2.4 lbs (1.1 Kg)

PRO870FX GRILLE SET

Fabric Wrapped Grille Accessory

Used with the PRO870FX loudspeaker



Packaged Individually

Stock Number

FG01514

Overview

An alternate three-grille set for the StageFront PRO870FX loudspeaker providing greater flexibility and customization

Features

- Each set includes three grilles: one forward-facing and two side
- Acoustically transparent black fabric mounted on a sturdy wooden frame provides classic, subtle appearance
- Steel studs ensure a precise, snug fit
- No tools required for installation
- Fits one PRO870FX

Specifications

- Dimensions (forward-facing grille): 9" wide x 17.7" high x 1.4" deep
(23 cm wide x 45 cm high x 3.6 cm deep)
- Dimensions (side grilles): 6.2" wide x 17.7" high x 1.1" deep
(15.7 cm wide x 45 cm high x 2.8 cm deep)

Warranty: Lifetime Limited

Shipping weight: 6 lbs (2.7 Kg)

IW2550LCR

Professional-Quality, In-Wall Enclosed LCR Loudspeaker

For high-performance left/center/right channel home theater applications



Packaged Individually
Stock Number
 FG01330

Overview

Our StageFront in-wall loudspeakers are expressly designed for superior sonic quality in home theater applications. Specify a complete set for a totally hidden home theater, or mix-and-match them with StageFront cabinet loudspeakers—they're voice-matched to blend perfectly.

Features

- Dual 5-1/4" injection-molded TCC™ (talc, carbon, and ceramic-filled) cone woofers are extremely rigid to reduce breakup, lower distortion, and enhance bass response
- 1" fluid-cooled Teteron® dome tweeter delivers ultra-wide dispersion and silky-smooth high-frequency response
- Cross-braced ported cabinet with integrated frame design fits standard 2x4 construction and is easily retrofitted
- Gold-plated input terminals accept 12 gauge wire and ensure positive connections
- Epoxy-coated MicroPerf™ grille provides an elegant yet unobtrusive appearance

Specifications

- Recommended amplifier power: 15 -125 watts
- Impedance: 6 ohms nominal; 3.2 ohms minimum
- Frequency response: 80 Hz - 20 kHz +/-3 dB
- Sensitivity: 88 dB (2.83V @ 1 meter)
- Hole cutout dimensions: 19-7/8" x 9-3/8" (50.45 cm x 23.80 cm)
- Depth from front of wall: 3-7/8" (9.83 cm)

Warranty: Lifetime Limited

Shipping weight: 18 lbs (8.2 Kg)



IW2650LCR

Professional-Quality, In-Wall Enclosed LCR Loudspeaker

For high-performance left/center/right channel home theater applications



Packaged Individually
Stock Number
 FG01329

Overview

Our StageFront in-wall loudspeakers are expressly designed for superior sonic quality in home theater applications. Specify a complete set for a totally hidden home theater, or mix-and-match them with StageFront cabinet loudspeakers—they're voice-matched to blend perfectly.

Features

- Dual 6-1/2" injection-molded TCC™ (talc, carbon, and ceramic-filled) cone woofers are extremely rigid to reduce breakup, lower distortion, and enhance bass response
- 1" fluid-cooled Teteron® dome tweeter delivers ultra-wide dispersion and silky-smooth high-frequency response
- Cross-braced ported cabinet with integrated frame design fits standard 2x4 construction and is easily retrofitted
- Gold-plated input terminals accept 12 gauge wire and ensure positive connections
- Epoxy-coated MicroPerf™ grille provides an elegant yet unobtrusive appearance

Specifications

- Recommended amplifier power: 15 -125 watts
- Impedance: 6 ohms nominal; 3.2 ohms minimum
- Frequency response: 70 Hz - 20 kHz +/-3 dB
- Sensitivity: 89 dB (2.83V @ 1 meter)
- Hole cutout dimensions: 19-7/8" x 9-3/8" (50.45 cm x 23.80 cm)
- Depth from front of wall: 3-7/8" (9.83 cm)

Warranty: Lifetime Limited

Shipping weight: 19 lbs (8.6 Kg)



PROFESSIONAL IN-WALL ENCLOSED HOME THEATER LOUDSPEAKERS

IW650FX

Professional-Quality, In-Wall Enclosed FX Loudspeaker

For high-performance surround effects home theater applications



Packaged in pairs

Stock Number

FG01331

Overview

Our StageFront in-wall loudspeakers are expressly designed for superior sonic quality in home theater applications. Specify a complete set for a totally hidden home theater, or mix-and-match them with StageFront cabinet loudspeakers—they're voice-matched to blend perfectly.

Features

- Forward-firing 6-1/2" injection-molded TCC™ (talc, carbon, and ceramic-filled) cone woofer is extremely rigid to reduce breakup, lower distortion and provide enhanced bass response
- Forward-firing 1" fluid-cooled Teteron® dome tweeter delivers ultra-wide dispersion and silky-smooth high-frequency response
- Dual side-firing 87 mm TCC™ surround effects drivers provide diffuse sound fields for optimum surround effects
- Front-mounted dipole/bipole switch and effects level control enable fine-tuning after installation
- Cross-braced ported cabinet with integrated frame design fits standard 2x4 construction and is easily retrofitted
- Gold-plated input terminals accept 12 gauge wire and ensure positive connections
- Epoxy-coated MicroPerf™ grille provides an elegant yet unobtrusive appearance

Specifications

- Recommended amplifier power: 15 -125 watts
- Impedance: 6 ohms nominal; 3.2 ohms minimum
- Frequency response: 80 Hz - 20 kHz +/-3 dB
- Sensitivity: 88 dB (2.83V @ 1 meter)
- Hole cutout dimensions: 20" x 9-3/8" (50.8 cm x 23.79 cm)
- Depth from front of wall: 3-7/8" (9.83 cm)

Warranty: Lifetime Limited

Shipping weight: 34 lbs (15.4 Kg)



IW2670LCR

Professional-Quality, In-Wall Enclosed LCR Loudspeaker

For high-performance left/center/right channel home theater applications



Packaged Individually

Stock Number

FG01327

Overview

Our StageFront in-wall loudspeakers are expressly designed for superior sonic quality in home theater applications. Specify a complete set for a totally hidden home theater, or mix-and-match them with StageFront cabinet loudspeakers—they're voice-matched to blend perfectly.

Features

- Dual 6.5" interlaced carbon-fiber woofers with butyl rubber surrounds provide increased sound pressure levels and sustained high power output
- 1" fluid-cooled Teteron® dome tweeter delivers ultra-wide dispersion and silky-smooth high-frequency response
- 1 1/2" fluid-cooled Teteron® dome midrange for smooth, detailed dialog
- Adjustable, cast aluminum, fully-enclosed dispersion-controlling midrange/tweeter pod enables precise imaging regardless of placement and accommodates vertical or horizontal installations
- Variable (+/-3 dB) midrange and treble controls enable fine tuning after installation
- Cross-braced ported cabinet with integrated frame design fits standard 2x4 construction and is easily retrofitted
- Gold-plated input terminals accept 12 gauge wire and ensure positive connections
- Epoxy-coated MicroPerf™ grille provides an elegant yet unobtrusive appearance

Specifications

- Recommended amplifier power: 15 -125 watts
- Impedance: 6 ohms nominal; 3.2 ohms minimum
- Frequency response: 70 Hz - 20 kHz +/-3 dB
- Sensitivity: 90 dB (2.83V @ 1 meter)
- Hole cutout dimensions: 24-1/4" x 10-1/2" (61.60 cm x 26.67 cm)
- Depth from front of wall: 3-7/8" (9.83 cm)

Warranty: Lifetime Limited

Shipping weight: 24 lbs (11 Kg)



IW2770LCR

Professional-Quality, In-Wall Enclosed LCR Loudspeaker

For high-performance left/center/right channel home theater applications



Packaged Individually

Stock Number

FG01326

Overview

Our StageFront in-wall loudspeakers are expressly designed for superior sonic quality in home theater applications. Specify a complete set for a totally hidden home theater, or mix-and-match them with StageFront cabinet loudspeakers—they're voice-matched to blend perfectly.

Features

- Dual 7" interlaced carbon-fiber woofers with butyl rubber surrounds provide increased sound pressure levels and sustained high power output
- 1" fluid-cooled Teteron® dome tweeter delivers ultra-wide dispersion and silky-smooth high-frequency response
- 1 1/2" fluid-cooled Teteron® dome midrange for smooth, detailed dialog
- Adjustable, cast aluminum, fully-enclosed dispersion-controlling midrange/tweeter pod enables precise imaging regardless of placement and accommodates vertical or horizontal installations
- Variable (+/-3 dB) midrange and treble controls enable fine tuning after installation
- Cross-braced ported cabinet with integrated frame design fits standard 2x4 construction and is easily retrofitted
- Gold-plated input terminals accept 12 gauge wire and ensure positive connections
- Epoxy-coated MicroPerf™ grille provides an elegant yet unobtrusive appearance

Specifications

- Recommended amplifier power: 15 -125 watts
- Impedance: 6 ohms nominal; 3.2 ohms minimum
- Frequency response: 70 Hz - 20 kHz +/-3 dB
- Sensitivity: 91 dB (2.83V @ 1 meter)
- Hole cutout dimensions: 24-1/4" x 10-1/2" (61.60 cm x 26.67 cm)
- Depth from front of wall: 3-7/8" (9.83 cm)

Warranty: Lifetime Limited

Shipping weight: 25.6 lbs (11.6kg)



IW770FX

Professional-Quality, In-Wall Enclosed FX Loudspeaker

For high-performance surround effects home theater applications



Packaged in pairs

Stock Number

FG01328

Overview

Our StageFront in-wall loudspeakers are expressly designed for superior sonic quality in home theater applications. Specify a complete set for a totally hidden home theater, or mix-and-match them with StageFront cabinet loudspeakers—they're voice-matched to blend perfectly.

Features

- Dual 6.5" interlaced carbon-fiber woofers with butyl rubber surrounds provide increased sound pressure levels and sustained high power output
- 1" fluid-cooled Teteron® dome tweeter delivers ultra-wide dispersion and silky-smooth high-frequency response
- Adjustable, cast aluminum, fully-enclosed dispersion-controlling midrange/tweeter pod enables precise imaging regardless of placement and accommodates vertical or horizontal installations
- Cross-braced ported cabinet with integrated frame design fits standard 2x4 construction and is easily retrofitted
- Gold-plated input terminals accept 12 gauge wire and ensure positive connections
- Epoxy-coated MicroPerf™ grille provides an elegant yet unobtrusive appearance

Specifications

- Recommended amplifier power: 15 -125 watts
- Impedance: 6 ohms nominal; 3.2 ohms minimum
- Frequency response: 70 Hz - 20 kHz +/-3 dB
- Sensitivity: 90 dB (2.83V @ 1 meter)
- Hole cutout dimensions: 24-1/4" x 10-1/2" (61.60 cm x 26.67 cm)
- Depth from front of wall: 3-7/8" (9.83 cm)

Warranty: Lifetime Limited

Shipping weight: 43 lbs (19.5 Kg)





GREAT TASTE IN BASS

Make it a Complete Niles System

Specify one of our powerful subwoofers to create a complete Niles music or home theater speaker system—from top to bottom. Combining a Niles subwoofer with our in-wall, ceiling-mount, cabinet, or on-wall loudspeakers gives you the design flexibility needed to create truly exciting entertainment for your customers, while maximizing the profit potential for your company.

The SW300, SW12, and SW10 are

self-contained, powered cabinet models. The SW10WM and SW10JM are enclosed in-wall and joist-mount models that can be powered by a Niles SWA-500M subwoofer amplifier installed in a remote location. Even though each subwoofer model has a distinct application, they all provide the perfect combination of performance, flexibility, and value.



For application-specific solutions, easy installation, and legendary quality and reliability, look no further than Niles Audio. Our integrated woofer/baffle provides a deeper, richer bass than similarly sized models.

KEY FEATURES



APPLICATION-SPECIFIC MODELS

The Niles philosophy of application-specific products continues in our subwoofers with cabinet models for home theater, plus hideaway in-wall and joist-mount models for installations that blend into the room's décor.



INSTALLER-FRIENDLY FEATURES

We know what installers want in a subwoofer, so we included useful features like cascade audio outputs, on/off system triggers, multiple turn-on modes, and RCA LFE inputs that bypass all filtered inputs.



AUTOMATION FLEXIBILITY

Three different turn-on modes, music sense, voltage trigger, and always on gives the installer tremendous installation flexibility.



STATE-OF-THE-ART AMPLIFICATION

Our powered subwoofers have built-in amplifiers that are perfectly matched to the model's driver technology and cabinet size. The SWA-500M Subwoofer Amplifier is a separate component that's ideally sized and configured to drive the on-powered in-wall and joist-mount models.



LIFETIME LIMITED WARRANTY

Our Lifetime Limited Warranty backs all non-powered Niles loudspeakers, including the SW10WM and SW10JM subwoofers, while our powered subwoofers are supported with a full two-year limited warranty.

SUBWOOFER AMPLIFIER

SWA-500M

Subwoofer Amplifier

Power amplifier for Niles passive subwoofers



Packaged Individually

Stock Number

FG01361

Overview

If you're installing a SW10WM or SW10JM Passive Sub, this is the amp that you want to use. It's powerful and equipped with everything needed for seamless, automated system integration.

Features

- Front mounted level, phase and low-pass controls for precise system and room matching
- 12V or music sense turn-on/off provide reliability and configuration flexibility
- Triggered music or movie modes enable customized settings for automated DVD Audio or Dolby® surround sound effects
- Gold-plated left, right and LFE inputs provide filtered or unfiltered signals to accommodate all system configurations
- Gold-plated 5-way binding posts accommodate multiple cable terminations
- Variable low pass filter: 12 dB/octave -3 dB @ 40 Hz, minimum position; -3 dB @ 120 Hz, maximum position
- Fixed low pass filter: 6 dB/octave -3 dB @ 125 Hz
- Variable high pass filter: 12 dB/octave
- Variable line level output: high pass 12 dB/octave; 3 dB @ 60 Hz knob full counter clockwise; 3 dB @160 Hz knob full clockwise
- Includes rack mounting kit and hardware

Specifications

- Power output: 500 watts continuous <1% THD +N into 4 ohms
- Power requirements: 120V/230V switchable
- Dimensions (without rack ears): 16-13/16" W x 3-1/2" H x 14-1/4" D (42.7 cm W x 8.89 cm H x 36.2 cm D)
- Dimensions (with rack ears): 19-13/16" W x 3-1/2" H x 14-1/4" D (50.32 cm W x 8.89 cm H x 36.2 cm D)

Warranty: Two-year limited

Shipping weight: 28.7 Lbs. (13 Kg)

POWERED SUBWOOFERS

SW10

**Powered Subwoofer; 10-in.;
125 Watt**

For smaller home theater applications



Packaged Individually

Stock Number

FG01236

Overview

This subwoofer is ideal for medium-sized home theater applications, the SW10 includes all of the custom installation features that Niles is famous for.

Features

- Advanced amplifier design ensures room-filling dynamic power
- 10" injection-molded TCC™ (Talc, Carbon and Ceramic-filled) polypropylene woofer with butyl rubber surround
- LFE input bypasses all input filters
- Left and right line level inputs include a fixed 80 Hz high-pass filter
- High level inputs enable connection to loudspeaker audio signals from a stereo or home theater receiver
- Cascade audio outputs for connecting additional system components and speakers
- On/off system trigger input accepts 3V-30V AC/DC
- Cascade trigger output allows easy expansion to other triggered system equipment
- Three turn-on modes: music sense, voltage trigger, and always on
- Gold-plated connection terminals ensure long term performance
- Subwoofer phase control switch ensures proper system integration
- Adjustable low pass filter: 60 Hz – 125 Hz
- Adjustable woofer level control
- Removable cloth grille

Specifications

- Amplifier power: 125 watts (peak)
- Frequency response: 30Hz - 160Hz +/-3dB
- AC power: 120V AC or 220-240V AC, Switchable
- Overall dimensions: 14-1/4" W x 15-1/4" H x 17-1/4" D (36.2 cm W x 38.74 cm H x 43.82 cm D)

Warranty: Two-year limited

Shipping weight: 47 Lbs. (21.3 Kg)

SW12

**Powered Subwoofer; 12-in.;
260 Watt**

For medium-sized home theater applications



Packaged Individually

Stock Number

FG01237

Overview

This subwoofer is ideal for medium-sized home theater applications, the SW 12 includes all of the custom installation features that Niles is famous for.

Features

- Advanced amplifier design ensures significant dynamic power
- 12" injection-molded TCC™ (Talc, Carbon and Ceramic-filled) polypropylene woofer with butyl rubber surround
- LFE input bypasses all input filters
- Left and right line level inputs include a fixed 80 Hz high-pass filter
- High level inputs enable connection to loudspeaker audio signals from a stereo or home theater receiver
- Cascade audio outputs for connecting additional system components and speakers
- On/off system trigger input accepts 3V-30V AC/DC
- Cascade trigger output allows easy expansion to other triggered system equipment
- Three turn-on modes: music sense, voltage trigger, and always on
- Gold-plated connection terminals ensure long term performance
- Subwoofer phase control switch ensures proper system integration
- Adjustable low pass filter: 60 Hz – 125 Hz
- Adjustable woofer level control

Specifications

- Amplifier power: 260 watts (peak)
- Frequency response: 27 Hz – 160 Hz +/-3 dB
- AC power: 120V AC or 220-240V AC, Switchable
- Overall dimensions: 14-1/4" W x 19" H x 19" D (36.2 cm W x 48.26 cm H x 48.26 cm D)

Warranty: Two-year limited

Shipping weight: 57 Lbs. (25.9 Kg)

PASSIVE SUBWOOFERS

SW10JM

Joist Mount Passive Subwoofer; 10-in.

For hidden away subwoofer applications



Packaged Individually
Stock Number
 FG01359

Overview

Subwoofers don't have to be big and take up lots of floor space. We designed the SW10JM to mount discreetly between ceiling joists or under floors for a completely hidden away appearance.

Features

- Mounts discreetly in ceiling joists or under floors
- 10" injection-molded TCC™ (Talc, Carbon, and Ceramic-filled) cone woofer is extremely rigid to reduce breakup, lower distortion, and enhance bass response
- Ported bandpass design
- Includes a custom register-type and a MicroPerf™ aluminum grille
- Butyl rubber surround damps resonance and provides exceptional durability
- Accommodates both 16" and 24" on-center joist construction
- Gold-plated input terminals accept 12-gauge wire and ensure a positive, long-lasting connection
- Adapts to both floor and ceiling installations for maximum flexibility
- Designed to be powered by the Niles SWA-500M Subwoofer Amplifier

Specifications

- Frequency response: 38 - 140 Hz +/-3 dB
- Impedance: 8 ohms—can be used in a double woofer installation with a Niles SWA-500M Subwoofer Amplifier
- Hole cutout dimensions: 13-1/8" W x 3-1/2" H (33.4 cm W x 9.02 cm H)
- Overall dimensions (with grille): 30" W x 9" H x 13-13/16" D (76.2 cm W x 22.86 cm H x 35.08 cm D)

Warranty: Lifetime Limited

Shipping weight: 57.3 Lbs. (25.8 Kg)

SW10WM

Wall-Mount Passive Subwoofer; 10"

For hidden away subwoofer applications

Packaged Individually
Stock Number
 FG01360



Overview

Subwoofers don't have to be big and take up lots of floor space. We designed the SW10WM to mount discreetly in the wall for a completely hidden away appearance.

Features

- 10" reinforced fiberglass cone woofer is extremely rigid to reduce breakup, lower distortion, and enhance bass response
- The reduced depth of the woofer creates a shallower cabinet
- Cross-braced cabinet fits standard 2x4 construction
- Gold-plated input terminals on the top and bottom support wiring configurations from the basement or attic
- Paintable MicroPerf™ grille blends in with any decor
- Spike feet decouple unwanted vibrations to the structure
- Tuned port cabinet design
- Designed to be powered by the SWA-500M Subwoofer Amplifier
- Floating grill and isolation pads reduce the transmission of vibration to drywall

Specifications

- Frequency response: 45 - 140 Hz +/-3dB
- Hole cutout dimensions: 12-3/4" W x 16-3/8" H (32.31 cm W x 41.5 cm H)
- Overall dimensions (with grille): 13-3/4" W x 46-5/16" H x 3-1/4" D (35 cm W x 117.6 cm H x 8.25 cm D)

Warranty: Lifetime Limited

Shipping weight: 47.8 Lbs. (21.7 Kg)



TOUGH ENOUGH FOR MARINE APPLICATIONS AND BEACH FRONT LIVING. EXCEEDS MILITARY ANTI-CORROSION SPECS (MIL-STD-883D).



CORNERS BEAUTIFULLY, EVEN IN THE WET

OS Indoor/Outdoor Loudspeakers

Niles OS Indoor/Outdoor Loudspeakers are designed to deliver great sound indoors and out. Every model in the line is equipped to handle the most extreme conditions—from blazing sun in Miami to blizzards in Minneapolis. In fact, these rugged loudspeakers even surpass military anti-corrosion standards (MIL-STD-883D). But great build quality is nothing without great sound. And that's why the OS series is the best-selling loudspeaker line in its class.

By integrating the woofer basket into the baffle of the cabinet (a design we pioneered in our award-winning DS Directed Soundfield™ loudspeakers) we are able to

increase the woofer cone area to cabinet width area ratio. This enables Niles OS Indoor/Outdoor Loudspeakers to provide levels of bass performance that substantially exceed their physical size.

The architecturally friendly design and integrated mounting bracket enable OS Indoor/Outdoor Loudspeakers to tuck discretely away in corners and under eaves. And even when used outdoors, every single model is backed by our Lifetime Limited Warranty. You can install the OS Series confidently knowing that they will perform brilliantly—for a lifetime.

KEY FEATURES



ALL-WEATHER VERSATILITY

OS Series Loudspeakers handle weather extremes and are even tough enough for marine applications and beach-front living.



INTEGRATED WOOFER/BAFFLE ASSEMBLY

We are able to substantially increase woofer cone size in relation to the cabinet size for bass performance that substantially exceeds other loudspeakers of similar size.



INDOOR AND OUTDOOR APPLICATIONS

These versatile loudspeakers also work well in home theater applications, kitchens, saunas, and bathrooms.



ARCHITECTURALLY FRIENDLY TAPERED SHAPE

We shaped the cabinets to facilitate mounting in corners and under eaves.

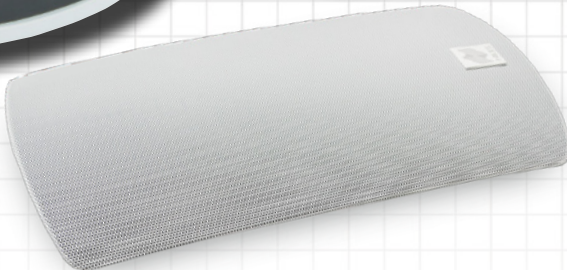
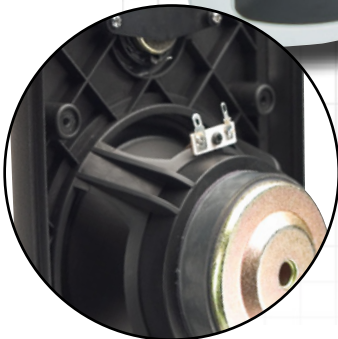


LIFETIME LIMITED WARRANTY

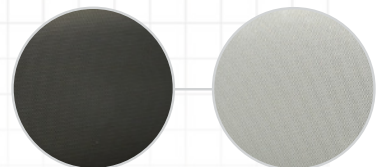
Install OS Series Loudspeakers with total confidence knowing they are backed by the best warranty in the business.



- Low Diffraction Grille and Front Baffle for Precise Imaging
- Integrated Woofer/Baffle Assembly
- Rigid, Acoustically Inert Cabinet
- Versatile Integrated Mounting Bracket
- Advanced Weatherproof Engineering
- Inverted Gold-Plated 5-Way Binding Posts
- MicroPerf™ Rustproof Aluminum Grilles



OS LOUDSPEAKERS



Black

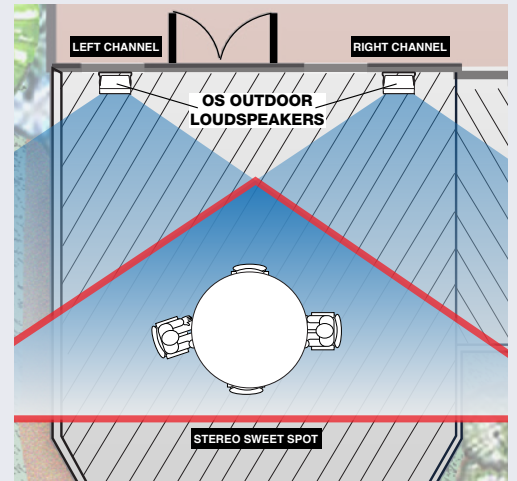
White

APPLICATIONS FOR OUTDOOR LOUDSPEAKERS

Application #1

Stereo Sound for a Patio with a Fixed Listening Area

In this application, we're working with a typical patio with a relatively fixed listening area: a table and chairs where people gather to dine when the weather is nice. Since most of the listening will be in this one area, the best solution is a pair of Niles OS Indoor/Outdoor Loudspeakers mounted on the wall wired to play stereo sound. Since the listeners are in the "sweet spot," they are positioned to enjoy the best possible stereo imaging. The sound will be spacious with a realistic soundstage of music filling the area.

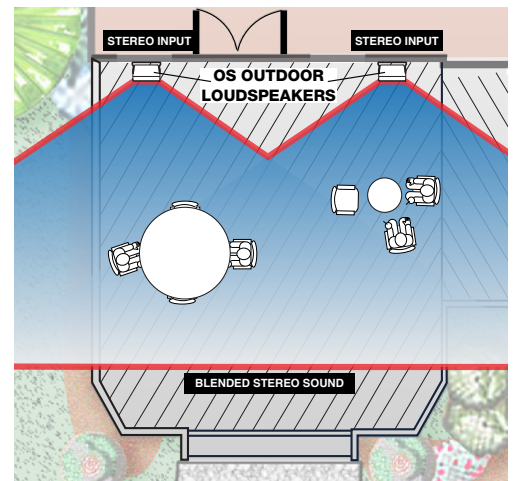


Application #2

Blended Stereo for a Patio with Multiple Listening Areas

But what happens when you step out of the "sweet spot?" In this application, we have multiple listening areas: people enjoying a weekend barbecue sitting at two tables and chairs. Sometimes, these listening areas are not located in the stereo "sweet spot" described in Application #1, so the listener's ability to hear the stereo image is diminished because of their proximity to one speaker. One speaker becomes dominant, masking the sound of the other.

The solution is a pair of Niles stereo input (SI) loudspeakers. SI loudspeakers produce blended stereo sound from a single cabinet by utilizing two properly positioned tweeters and a dual voice coil woofer. The stereo imaging and spaciousness may not be as good as the "sweet spot" using conventional stereo loudspeakers, but in turn, you get even coverage of stereo-like sound. There are SI versions of all Niles outdoor loudspeakers—OS, Rocks, and Planters—so you have plenty of designs to choose from.

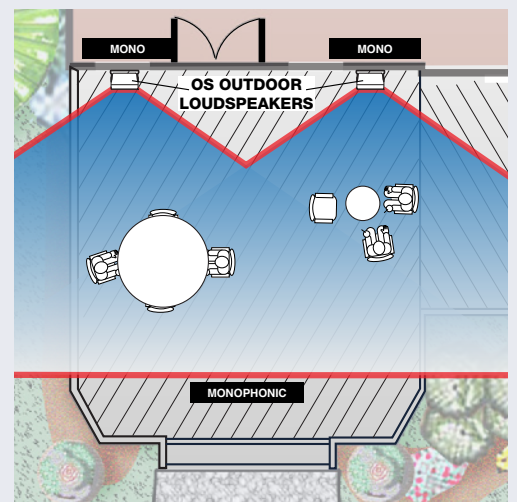


Application #3

Background Music for a Patio with Multiple Listening Areas

In applications where the music is mainly played in the background or where people are constantly moving, consider wiring the loudspeakers for monophonic sound. In this scenario, each loudspeaker plays a combination of both stereo channels, eliminating the sweet spot limitations of stereo. Of course you'll lose the stereo effects in the music, but for background listening, it's a reasonable compromise.

To wire for mono sound, the zone preamp outputs of the multizone receiver are connected to a separate power amplifier using two "Y" adapters. This effectively combines the left and right channels into one. Or you can use a Niles 12-Channel Systems Integration Amplifier®. It provides a simple way to configure channels for stereo or mono (L + R).



OS INDOOR/OUTDOOR LOUDSPEAKERS

OS5.3

High Performance Indoor/Outdoor Loudspeaker

Weatherproof construction exceeds military anti-corrosion specs (MIL-STD-883D)



Packaged in pairs

Color	Stock Number
White	FG00986
Black	FG00987

Overview

Renowned for their reliability and performance, OS Indoor/Outdoor Loudspeakers are a favorite throughout the world. By integrating the woofer basket in the cabinet baffle, the woofer cone area has been increased for deeper, richer bass response.

Features

- Integrated woofer/baffle assembly increases cone area to provide powerful bass output
- 5" Mica-filled polypropylene woofer cone is extremely rigid to reduce breakup and lower distortion
- Butyl rubber cone surround damps resonance and provides exceptional durability
- 1" UltraSilk® dome tweeter with fluid-cooling provides ultra-wide dispersion and clear, detailed and extended high frequency response

Specifications

- Recommended amplifier power: 5 – 100 watts
- Impedance: 8 ohms
- Frequency response: 100 Hz to 21 kHz +/-3dB
- Sensitivity: 90dB for 2.83V pink noise
- Dimensions (includes bracket): 6-1/4" wide x 9-7/8" high x 6-3/4" deep (16 cm wide x 25 cm high x 17 cm deep)

Warranty: Lifetime Limited

Shipping weight: 11 lbs. (5 Kg)

OS5.5

High Performance Indoor/Outdoor Loudspeaker

Weatherproof construction exceeds military anti-corrosion specs (MIL-STD-883D)



Packaged in pairs

Color	Stock Number
White	FG00992
Black	FG00993

Overview

Renowned for their reliability and performance, OS Indoor/Outdoor Loudspeakers are a favorite throughout the world. By integrating the woofer basket in the cabinet baffle, the woofer cone area has been increased for deeper, richer bass response.

Features

- Integrated woofer/baffle assembly increases cone area to provide powerful bass output
- 5" interlaced carbon fiber woofer cone is extremely rigid to reduce breakup and lower distortion
- Butyl rubber cone surround damps resonance and provides exceptional durability
- Dispersion Stabilizer distributes midrange tones for clear off-axis sound
- 1" Tri-laminate Teteron® dome tweeter with fluid-cooling provides ultra-wide dispersion for clear and detailed high frequency response

Specifications

- Recommended amplifier power: 5 – 100 watts
- Impedance: 8 ohms
- Frequency response: 95 Hz to 23 kHz +/-3dB
- Sensitivity: 90 dB for 2.83V pink noise
- Dimensions (includes bracket): 6-1/4" wide x 9-7/8" high x 6-3/4" deep (16 cm wide x 25 cm high x 17 cm deep)

Warranty: Lifetime Limited

Shipping weight: 12 lbs. (5.4 Kg)

OS INDOOR/OUTDOOR LOUDSPEAKERS

OS6.3

High Performance Indoor/Outdoor Loudspeaker

Weatherproof construction exceeds military anti-corrosion specs (MIL-STD-883D)



Packaged in pairs

Color	Stock Number
White	FG00988
Black	FG00989

Overview

Renowned for their reliability and performance, OS Indoor/Outdoor Loudspeakers are a favorite throughout the world. By integrating the woofer basket in the cabinet baffle, the woofer cone area has been increased for deeper, richer bass response.

Features

- Integrated woofer/baffle assembly increases cone area to provide powerful bass output
- 6" Mica-filled polypropylene woofer cone is extremely rigid to reduce breakup and lower distortion
- Butyl rubber cone surround damps resonance and provides exceptional durability
- 1" UltraSilk® dome tweeter with fluid-cooling provides ultra-wide dispersion and clear, detailed and extended high frequency response

Specifications

- Recommended amplifier power: 5 – 125 watts
- Impedance: 8 ohms
- Frequency response: 75 Hz to 21 kHz +/-3dB
- Sensitivity: 90dB for 2.83V pink noise
- Dimensions (includes bracket): 7-7/16" wide x 12" high x 7-3/4" deep (19 cm wide x 30.5 cm high x 19.7 cm deep)

Warranty: Lifetime Limited

Shipping weight: 21 lbs. (9.5 Kg)

OS6.5

High Performance Indoor/Outdoor Loudspeaker

Weatherproof construction exceeds military anti-corrosion specs (MIL-STD-883D)



Packaged in pairs

Color	Stock Number
White	FG00994
Black	FG00995

Overview

Renowned for their reliability and performance, OS Indoor/Outdoor Loudspeakers are a favorite throughout the world. By integrating the woofer basket in the cabinet baffle, the woofer cone area has been increased for deeper, richer bass response.

Features

- Integrated woofer/baffle assembly increases cone area to provide powerful bass output
- 6" interlaced carbon fiber woofer cone is extremely rigid to reduce breakup and lower distortion
- Butyl rubber cone surround damps resonance and provides exceptional durability
- Dispersion Stabilizer distributes midrange tones for clear off-axis sound
- 1" Tri-laminate Teteron® dome tweeter with fluid-cooling provides ultra-wide dispersion for clear and detailed high frequency response

Specifications

- Recommended amplifier power: 5 – 125 watts
- Impedance: 8 ohms
- Frequency response: 70 Hz to 23 kHz +/-3dB
- Sensitivity: 90 dB for 2.83V pink noise
- Dimensions (includes bracket): 7-7/16" wide x 12" high x 7-3/4" deep (19 cm wide x 30.5 cm high x 19.7 cm deep)

Warranty: Lifetime Limited

Shipping weight: 18 lbs. (8.2 Kg)

OS INDOOR/OUTDOOR LOUDSPEAKERS

OS7.3

High Performance Indoor/Outdoor Loudspeaker

Weatherproof construction exceeds military anti-corrosion specs (MIL-STD-883D)



Packaged in pairs

Color	Stock Number
White	FG00990
Black	FG00991

Overview

Renowned for their reliability and performance, OS Indoor/Outdoor Loudspeakers are a favorite throughout the world. By integrating the woofer basket in the cabinet baffle, the woofer cone area has been increased for deeper, richer bass response.

Features

- Integrated woofer/baffle assembly increases cone area to provide powerful bass output
- 7" Mica-filled polypropylene woofer cone is extremely rigid to reduce breakup and lower distortion
- Butyl rubber cone surround damps resonance and provides exceptional durability
- 1" UltraSilk® dome tweeter with fluid-cooling provides ultra-wide dispersion and clear, detailed and extended high frequency response

Specifications

- Recommended amplifier power: 5 – 150 watts
- Impedance: 8 ohms
- Frequency response: 65 Hz to 21 kHz +/-3dB
- Sensitivity: 91dB for 2.83V pink noise
- Dimensions (includes bracket): 8-3/16" wide x 13-5/16" high x 9-3/16" deep (21 cm wide x 34 cm high x 23.3 cm deep)

Warranty: Lifetime Limited

Shipping weight: 21 lbs. (9.5 Kg)

OS7.5

High Performance Indoor/Outdoor Loudspeaker

Weatherproof construction exceeds military anti-corrosion specs (MIL-STD-883D)



Packaged in pairs

Color	Stock Number
White	FG00996
Black	FG00997

Overview

Renowned for their reliability and performance, OS Indoor/Outdoor Loudspeakers are a favorite throughout the world. By integrating the woofer basket in the cabinet baffle, the woofer cone area has been increased for deeper, richer bass response.

Features

- Integrated woofer/baffle assembly increases cone area to provide powerful bass output
- 7" interlaced carbon fiber woofer cone is extremely rigid to reduce breakup and lower distortion
- Butyl rubber cone surround damps resonance and provides exceptional durability
- Dispersion Stabilizer distributes midrange tones for clear off-axis sound
- 1" Tri-laminate Teteron® dome tweeter with fluid-cooling provides ultra-wide dispersion and clear and detailed high frequency response

Specifications

- Recommended amplifier power: 5 – 150 watts
- Impedance: 8 ohms
- Frequency response: 60 Hz to 23 kHz +/-3dB
- Sensitivity: 91dB for 2.83V pink noise
- Dimensions (includes bracket): 8-3/16" wide x 13-5/16" high x 9-3/16" deep (21 cm wide x 34 cm high x 23.3 cm deep)

Warranty: Lifetime Limited

Shipping weight: 23 lbs. (10.4 Kg)



Electronic House Magazine
Product of the Year

OS STEREO INPUT INDOOR/OUTDOOR LOUDSPEAKERS

OS5.3Si

Stereo Input Indoor/Outdoor Loudspeaker

Weatherproof construction exceeds military anti-corrosion specs (MIL-STD-883D)



Packaged Individually

Color	Stock Number
White	FG00998
Black	FG00999

Overview

Renowned for their reliability and performance, OS Indoor/Outdoor Loudspeakers are a favorite throughout the world. This stereo input model reproduces stereo sound from a single loudspeaker.

Features

- Integrated woofer/baffle assembly increases cone area to provide powerful bass output
- 5" Mica-filled polypropylene woofer cone is extremely rigid to reduce breakup and lower distortion
- Dual voice coils deliver both left and right channels from a single woofer
- Butyl rubber cone surround damps resonance and provides exceptional durability
- Stereo Imaging Tweeter Array directs the high frequency sounds from both the left and right channels at opposing angles to preserve stereo separation
- Dual 1" UltraSilk® dome tweeters with fluid-cooling provides ultra-wide dispersion and clear, detailed and extended high frequency response

Specifications

- Recommended amplifier power: 5 – 100 watts
- Impedance: 8 ohms per channel, wired in stereo; 4 ohms with both channels wired together
- Frequency response: 85 Hz to 21 kHz +/-3dB
- Sensitivity: 90dB for 2.83V pink noise
- Dimensions (includes bracket): 7-7/16" wide x 12" high x 7-3/4" deep (19 cm wide x 30.5 cm high x 19.7 cm deep)

Warranty: Lifetime Limited

Shipping weight: 10 lbs. (4.5 Kg)

OS6.3Si

Stereo Input Indoor/Outdoor Loudspeaker

Weatherproof construction exceeds military anti-corrosion specs (MIL-STD-883D)



Packaged Individually

Color	Stock Number
White	FG01000
Black	FG01001

Overview

Renowned for their reliability and performance, OS Indoor/Outdoor Loudspeakers are a favorite throughout the world. This stereo input model reproduces stereo sound from a single loudspeaker.

Features

- Integrated woofer/baffle assembly increases cone area to provide powerful bass output
- 6" Mica-filled polypropylene woofer cone is extremely rigid to reduce breakup and lower distortion
- Dual voice coils deliver both left and right channels from a single woofer
- Butyl rubber cone surround damps resonance and provides exceptional durability
- Stereo Imaging Tweeter Array directs the high frequency sounds from both the left and right channels at opposing angles to preserve stereo separation
- Dual 1" UltraSilk® dome tweeters with fluid-cooling provides ultra-wide dispersion and clear, detailed and extended high frequency response

Specifications

- Recommended amplifier power: 5 – 125 watts
- Impedance: 8 ohms per channel, wired in stereo; 4 ohms with both channels wired together
- Frequency response: 75 Hz to 21 kHz +/-3dB
- Sensitivity: 90dB for 2.83V pink noise
- Dimensions (includes bracket): 8-3/16" wide x 13-5/16" high x 9-3/16" deep (21 cm wide x 34 cm high x 23.3 cm deep)

Warranty: Lifetime Limited

Shipping weight: 12 lbs. (5.4 Kg)



WHEN ENTERTAINING MOVES OUTDOORS

Rock and Planter Loudspeakers

Rugged good looks and natural sound make Niles' GeoRealistic™ Rock and Planter Loudspeakers the professionals' choice for outdoor music applications. We achieved our leadership role by offering a wide range of models and finishes designed to blend into virtually any outdoor environment. Our popular Rocks are available in granite, speckled granite, coral, sandstone, and shale brown, while our Planters (and yes, you can really use them as planters) come in terracotta and weathered concrete finishes.

We spent a lot of time making them look good. But it's the way they sound that really makes GeoRealistic™

loudspeakers special. For example, our ConeForward™ design positions the drivers close to the grille to markedly improve midrange intelligibility. Our PS6Si Planter features an innovative movable tweeter assembly that adjusts the sound dispersion from 180° for placement in open areas, to 90° for corners.

And since we build them so well, they come with our Lifetime Limited Warranty. So there you go: the best sound, the best looks, the best warranty...and the best profit potential. For your outdoor installations, there's no reason to look anywhere else.

KEY FEATURES



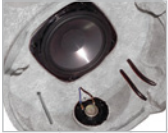
GEOREALISTIC™ COLORS AND FINISHES

Pavarotti from a planter. Rachmaninoff from a rock. Your customers will be amazed at how great sound can come from a rock in the garden or a planter on the patio.



STEREO INPUT (SI) TECHNOLOGY

Select Rocks and all Planters take advantage of Niles' Stereo Input Technology to create pleasing stereo sound from a single loudspeaker.



ADVANCED DRIVER MATERIALS

Our injection-molded TCC™ woofers and Teteron® tweeters are specifically designed to reproduce high fidelity music and to handle the harshest outdoor weather conditions.



PLANTERS THAT ARE REAL PLANTERS

Our Planter Loudspeakers really do double as planters, so fill them up with some rich soil and plant your favorites.



LIFETIME LIMITED WARRANTY

Install Niles weatherproof loudspeakers with total confidence knowing they are backed by the best warranty in the business.



RS8Si

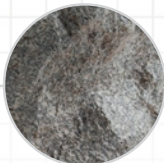
- GeoRealistic Color and Finish
- Stereo Input Technology
- ConeForward™ Design Improves Midrange
- Injection-Molded TCC (Talc, Carbon, Ceramic-filled) Woofer Cones
- Tri-Laminate Teteron® Dome Tweeters
- Dual Tweeters Mounted at a 20° Angle (Stereo Input Models)

ROCK LOUDSPEAKERS

PLANTER SPEAKER



Shale Brown



Speckled Granite



Granite



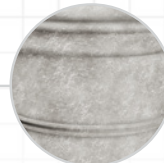
Coral



Sandstone



Terracotta



Weathered Concrete

APPLICATIONS FOR ROCK AND PLANTER LOUDSPEAKER

Our versatile Rock and Planter loudspeakers cover virtually every outdoor application, are built for years of trouble-free use, and feature the peace of mind that comes with our Lifetime Limited warranty.



Pools and Patios

Solution: Niles Planter Loudspeakers

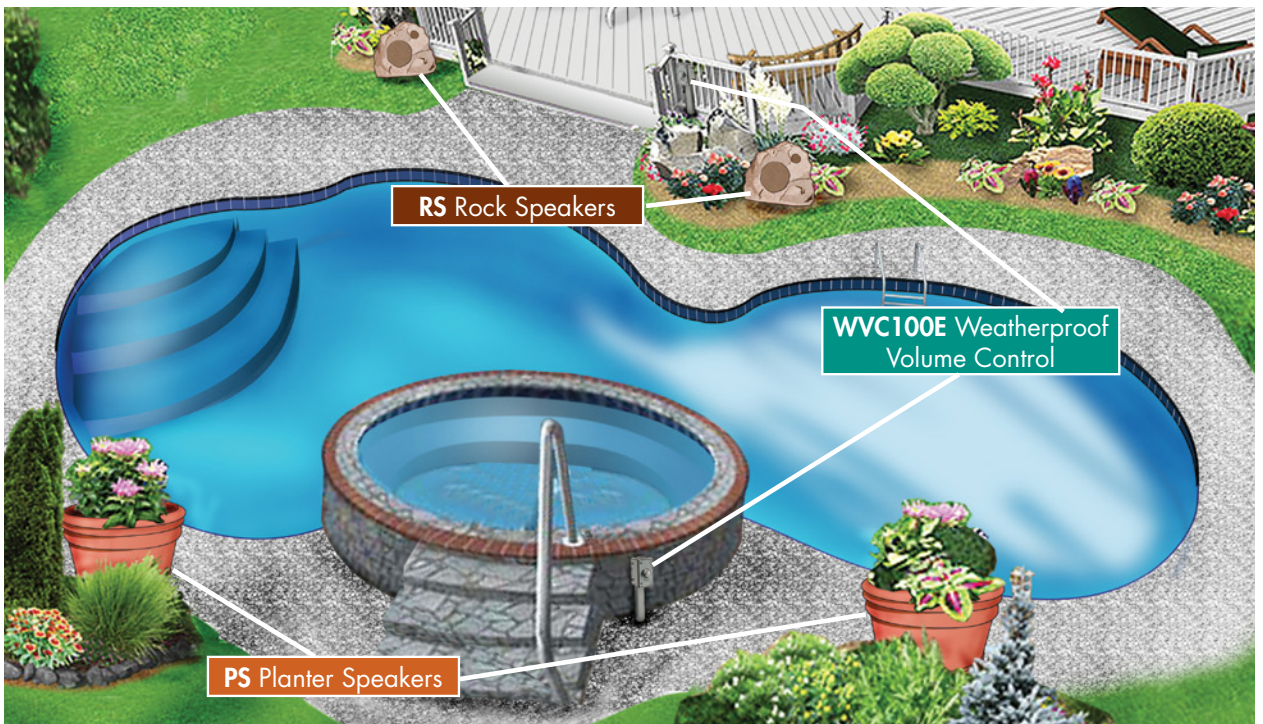
Use Niles Planter Loudspeakers to combine great outdoor sound with beautiful landscaping. Choose from two different styles: the traditional circular planter shape, and a rectangular box shape. Niles Planter Loudspeakers can be configured in two-speaker stereo, single speaker stereo, and monophonic modes.



Gardens and Landscaping

Solution: Niles Rock Loudspeakers

With five different GeoRealistic™ finishes, Niles Rock Loudspeakers are sure to be the perfect match with any outdoor environment. Spread them evenly throughout your backyard landscaping to provide even sound coverage throughout the outdoor area.



RS5

High-Performance Rock Loudspeaker, 5" Two-Way

For living room quality sound outdoors

Overview

Rugged good looks and natural sound make Niles GeoRealistic™ Rock Loudspeakers the professional's choice. There's a wide range of finishes to perfectly blend with any outdoor environment.



Speckled Granite

Packaged Individually

Stock Number

FG01131



Granite

Packaged Individually

Stock Number

FG01071



Coral

Packaged Individually

Stock Number

FG01073



Sandstone

Packaged Individually

Stock Number

FG01072



Shale Brown

Packaged Individually

Stock Number

FG01464

Features

- 5-1/4" injection-molded TCC (talc, carbon, and ceramic-filled) polypropylene woofer cone is extremely rigid to reduce breakup and lower distortion
- Butyl rubber cone surround damps resonance and provides exceptional durability
- ConeForward™ design positions drivers close to the grille to improve midrange intelligibility
- 3/4" Kaladex® dome tweeter with fluid-cooling for wide dispersion and clear high frequency response

Specifications

- Recommended amplifier power: 10 – 100 watts
- Impedance: 8 ohms
- Frequency response: 70 Hz – 21 kHz +/-3 dB
- Sensitivity: 89 dB for 2.83V pink noise
- Dimensions: 10" wide x 9-1/2" high x 8-1/2" deep (25.4 cm wide x 24 cm x 22 cm deep)

Warranty: Lifetime Limited

Shipping weight: 12 lbs. (5.4 Kg)

WEATHERPROOF ROCK LOUDSPEAKERS

RS6

High-Performance Rock Loudspeaker, 6" Two-Way

For living room quality sound outdoors

Overview

Rugged good looks and natural sound make Niles GeoRealistic™ Rock Loudspeakers the professional's choice. There's a wide range of finishes to perfectly blend with any outdoor environment.



Speckled Granite

Packaged Individually

Stock Number

FG01130



Granite

Packaged Individually

Stock Number

FG01027



Coral

Packaged Individually

Stock Number

FG01029



Sandstone

Packaged Individually

Stock Number

FG01028



Shale Brown

Packaged Individually

Stock Number

FG01465

Features

- 6-1/2" injection-molded TCC (talc, carbon, and ceramic-filled) polypropylene woofer cone is extremely rigid to reduce breakup and lower distortion
- Butyl rubber cone surround damps resonance and provides exceptional durability
- ConeForward™ design positions drivers close to the grille to improve midrange intelligibility
- 1" Tri-laminate Teteron® dome tweeter with fluid-cooling for ultra-wide dispersion and detailed high frequency response

Specifications

- Recommended amplifier power: 10 – 150 watts
- Impedance: 8 ohms
- Frequency response: 60 Hz – 21 kHz +/-3 dB
- Sensitivity: 89 dB for 2.83V pink noise
- Dimensions: 14" wide x 12" high x 11" deep (35.6 cm wide x 30.5 cm x 28 cm deep)

Warranty: Lifetime Limited

Shipping weight: 23 lbs. (10.4 Kg)

RS6Si

Dual Tweeter High-Performance Rock Loudspeaker, 6" Two-Way

Mono, two-speaker stereo, or single speaker stereo input modes

Overview

Rugged good looks and natural sound make Niles GeoRealistic™ Rock Loudspeakers the professional's choice. There's a wide range of finishes to perfectly blend with any outdoor environment.



Speckled Granite

Packaged Individually
Stock Number
FG01470



Granite

Packaged Individually
Stock Number
FG01467



Coral

Packaged Individually
Stock Number
FG01469



Sandstone

Packaged Individually
Stock Number
FG01468



Shale Brown

Packaged Individually
Stock Number
FG01471

Features

- 6" injection-molded TCC (talc, carbon, and ceramic-filled) polypropylene woofer cone is extremely rigid to reduce breakup and lower distortion
- Butyl rubber cone surround damps resonance and provides exceptional durability
- Dual voice coils deliver both left and right channels from one speaker
- ConeForward™ design positions drivers close to the grille to improve midrange intelligibility
- Dual 1" Tri-laminate Teteron® dome tweeters with fluid-cooling for ultra-wide dispersion and detailed high frequency response
- Tweeters mounted at a 20° angle for optimum dispersion

Specifications

- Recommended amplifier power: 10 – 200 watts
- Impedance: 4 ohms in two-speaker stereo mode; 8 ohms in single-speaker stereo input "Si" mode
- Frequency response: 50 Hz – 21 kHz +/-3 dB
- Sensitivity: 88 dB for 2.83V pink noise
- Dimensions: 14" wide x 12" high x 11" deep (35.6 cm wide x 30.5 cm x 28 cm deep)

Warranty: Lifetime Limited

Shipping weight: 23 lbs. (10.4 Kg)

WEATHERPROOF ROCK LOUDSPEAKERS

RS8Si

Dual Tweeter High-Performance Rock Loudspeaker, 8" Two-Way

Mono, two-speaker stereo, or single speaker stereo input modes

Overview

Rugged good looks and natural sound make Niles GeoRealistic™ Rock Loudspeakers the professional's choice. There's a wide range of finishes to perfectly blend with any outdoor environment.



Speckled Granite

Packaged Individually

Stock Number

FG01129



Granite

Packaged Individually

Stock Number

FG01030



Coral

Packaged Individually

Stock Number

FG01032



Sandstone

Packaged Individually

Stock Number

FG01031



Shale Brown

Packaged Individually

Stock Number

FG01466

Features

- 8" injection-molded TCC (talc, carbon, and ceramic-filled) polypropylene woofer cone is extremely rigid to reduce breakup and lower distortion
- Butyl rubber cone surround damps resonance and provides exceptional durability
- Dual voice coils deliver both left and right channels from one speaker
- ConeForward™ design positions drivers close to the grille to improve midrange intelligibility
- Dual 1" Tri-laminate Teteron® dome tweeters with fluid-cooling for ultra-wide dispersion and detailed high frequency response
- Tweeters mounted at a 20° angle for optimum dispersion

Specifications

- Recommended amplifier power: 10 – 200 watts
- Impedance: 4 ohms In two-speaker stereo mode; 8 ohms in single-speaker stereo input "Si" mode
- Frequency response: 50 Hz – 21 kHz +/-3 dB
- Sensitivity: 88 dB for 2.83V pink noise
- Dimensions: 19-1/2" wide x 12-1/2" high x 16-1/2" deep (50 cm wide x 31.75 cm x 42 cm deep)

Warranty: Lifetime Limited

Shipping weight: 33 lbs. (15 Kg)

STEREO INPUT WEATHERPROOF PLANTER LOUDSPEAKERS

PS6Si

Dual Tweeter High-Performance Planter Loudspeaker, 6" Two-Way

Mono, two-speaker stereo, or single speaker stereo input modes



Terracotta

Packaged Individually
Stock Number
FG01264



Weathered Concrete

Packaged Individually
Stock Number
FG01366

Overview

Available in classic terracotta and weathered concrete finishes, our Planter Loudspeakers sound and look great—and you can actually use them as planters!

Features

- Artistically crafted cabinet with shaped MicroPerf™ aluminum grilles looks like the real thing
- 6-1/2" dual voice coil injection-molded TCC (talc, carbon, and ceramic-filled) polypropylene woofer with butyl rubber surround for deep, low distortion bass response
- Dual 1" fluid-cooled tri-laminate Teteron® dome tweeter assembly has adjustable sound dispersion from 180° (for open spaces) to 90° (for corners)
- Separate left and right channel inputs provide satisfying stereo sound from a single loudspeaker
- Weatherproof design ensures high performance and longevity
- Designed to accommodate live plants
- Dual 3-foot burial-rated connection cables with waterproof wire-nuts for a trouble-free connection
- Can be wired in mono, two-speaker stereo, or single speaker stereo input modes



Specifications

- Recommended amplifier power: 10 – 150 watts
- Impedance: 8 ohms
- Frequency response: 60 Hz – 21 kHz +/-3 dB
- Sensitivity: 89 dB for 2.83V pink noise
- Dimensions: 19-1/2" wide x 19-1/2" high x 19-1/2" deep (50 cm wide x 50 cm x 50 cm deep)

Warranty: Lifetime Limited

Shipping weight: 35 lbs. (16 Kg)



2006 Excite award winner.

PB6Si

Dual Tweeter High-Performance Planter Loudspeaker, 6" Two-Way

Mono, two-speaker stereo, or single speaker stereo input modes



Terracotta

Packaged Individually
Stock Number
FG01462



Weathered Concrete

Packaged Individually
Stock Number
FG01463

Overview

Available in classic terracotta and weathered concrete finishes, our Planter Loudspeakers sound and look great—and you can actually use them as planters!

Features

- Artistically crafted cabinet with shaped MicroPerf™ aluminum grilles looks like the real thing
- 6-1/2" dual voice coil injection-molded TCC (talc, carbon, and ceramic-filled) polypropylene woofer with butyl rubber surround for deep, low distortion bass response
- Dual 1" fluid-cooled tri-laminate Teteron® dome tweeter assembly has adjustable sound dispersion from 180° (for open spaces) to 90° (for corners)
- Separate left and right channel inputs provide satisfying stereo sound from a single loudspeaker
- Weatherproof design ensures high performance and longevity
- Designed to accommodate live plants
- Dual 3-foot burial-rated connection cables with waterproof wire-nuts for a trouble-free connection
- Can be wired in mono, two-speaker stereo, or single speaker stereo input modes

Specifications

- Recommended amplifier power: 10 – 150 watts
- Impedance: 8 ohms
- Frequency response: 60 Hz – 21 kHz +/-3 dB
- Sensitivity: 89 dB for 2.83V pink noise
- Dimensions: 28" wide x 12-1/2" high x 11-1/2" deep (71 cm wide x 32 cm x 29 cm deep)

Warranty: Lifetime Limited

Shipping weight: 35 lbs. (16 Kg)

QUICK REFERENCE GUIDE

Stock No.	Part Description	Unit	Mstr. Carton	Pg No.
DS DIRECTED SOUNDFIELD™ CEILING MOUNT LOUDSPEAKERS				
FG01614	DS7MP Directed Soundfield 7" Ceiling-Mount Loudspeaker	ea	N/A	10
FG01617	DS7PR Directed Soundfield 7" Ceiling-Mount Loudspeaker	ea	N/A	10
FG01621	DS7HD Directed Soundfield 7" Ceiling-Mount Loudspeaker	ea	N/A	10
FG01618	DS7FX Directed Soundfield 7" Ceiling-Mount Loudspeaker	pr	N/A	10
FG01616	DS7SI Directed Soundfield 7" Ceiling-Mount Loudspeaker	ea	N/A	10
FG01619	DS8PR Directed Soundfield 8" Ceiling-Mount Loudspeaker	ea	N/A	11
FG01623	DS8HD Directed Soundfield 8" Ceiling-Mount Loudspeaker	ea	N/A	11
FG01624	DS8FX Directed Soundfield 8" Ceiling-Mount Loudspeaker	pr	N/A	11
FG01647	NCB7C New Construction Bracket for 7"	pr	N/A	10
FG01643	RWE7C Rear Wave Enclosure for 7"	ea	N/A	10
FG01645	SG7C Square Grille Kit for 7"	pr	N/A	10
FG01648	NCB8C New Construction Bracket for 8"	pr	N/A	11
FG01644	RWE8C Rear Wave Enclosure for 8"	ea	N/A	11
FG01646	SG8C Square Grille Kit for 8"	pr	N/A	11
CEILING MOUNT LOUDSPEAKERS				
FG01294	CM610 6" 2-Way Loudspeaker	pr	4 Pairs	14
FG01295	CM630 6" 2-Way Loudspeaker	pr	4 Pairs	14
FG01296	CM710 7" 2-Way Loudspeaker	pr	4 Pairs	15
FG01297	CM730 7" 2-Way Loudspeaker	pr	4 Pairs	15
FG01298	CM750 7" 2-Way Loudspeaker	pr	4 Pairs	16
FG01299	CM760 7" 2-Way Loudspeaker	pr	4 Pairs	16
FG01303	CM710SI 7" Stereo Input Loudspeaker	ea	4 Individual	17
FG01304	CM730SI 7" Stereo Input Loudspeaker	ea	4 Individual	17
FG01305	CM750SI 7" Stereo Input Loudspeaker	ea	4 Individual	18
FG01306	CM710FX 7" Surround Effects Loudspeaker	pr	4 Pairs	19
FG01307	CM750FX 7" Surround Effects Loudspeaker	pr	4 Pairs	19
FG01479	CM830 8" 2-Way Loudspeaker	pr	4 Pairs	20
FG01480	CM850 8" 2-Way Loudspeaker	pr	4 Pairs	20
FG01481	CM860 8" 2-Way Loudspeaker	pr	4 Pairs	21
FG01482	CM850Si 8" Stereo Input Loudspeaker	ea	4 Individual	21
FG01300	CM600 BKT New Construction Bracket	pr	4 Pairs	24
FG01301	CM600 Hole Cover Ceiling Hole Saver	pr	4 Pairs	24
FG01308	CM700 BKT New Construction Bracket	pr	4 Pairs	24
FG01309	CM700 Hole Cover Ceiling Hole Saver	pr	4 Pairs	24
FG01487	CM800 BKT New Construction Bracket	pr	4 Pairs	25
FG01488	CM800 Hole Cover Ceiling Hole Saver	pr	4 Pairs	25
FG00942	CE 70 Fire Rated Enclosure for 6" CM Loudspeakers	ea	2 Individual	26
FG00944	CE 6 Fire Rated Enclosure for 7" CM Loudspeakers	ea	2 Individual	27
FG00946	CE 8 Fire Rated Enclosure for 8" CM Loudspeakers	ea	2 Individual	28

*Requires bracket kit for installation (sold separately)

QUICK REFERENCE GUIDE

Stock No.	Part Description	Unit	Mstr. Carton	Pg No.
IN-WALL LOUDSPEAKERS				
FG00874	MP5R 5 1/4" 2-Way Multipurpose In-Wall Loudspeaker	pr	4 Pairs	32
FG00873	MP5 5 1/4" 2-Way Multipurpose In-Wall Loudspeaker*	pr	4 Pairs	32
FG00878	PR5R 5 1/4" 2-Way Performance In-Wall Loudspeaker	pr	4 Pairs	32
FG00877	PR5 5 1/4" 2-Way Performance In-Wall Loudspeaker*	pr	4 Pairs	32
FG00882	HD5R 5 1/4" 2-Way High Definition In-Wall Loudspeaker	pr	4 Pairs	33
FG00881	HD5 5 1/4" 2-Way High Definition In-Wall Loudspeaker*	pr	4 Pairs	33
FG00876	MP6R 6 1/2" 2-Way Multipurpose In-Wall Loudspeaker	pr	4 Pairs	34
FG00875	MP6 6 1/2" 2-Way Multipurpose In-Wall Loudspeaker*	pr	4 Pairs	34
FG00880	PR6R 6 1/2" 2-Way Performance In-Wall Loudspeaker	pr	4 Pairs	34
FG00879	PR6 6 1/2" 2-Way Performance In-Wall Loudspeaker*	pr	4 Pairs	34
FG00884	HD6R 6 1/2" 2-Way High Definition In-Wall Loudspeaker	pr	4 Pairs	35
FG00883	HD6 6 1/2" 2-Way High Definition In-Wall Loudspeaker*	pr	4 Pairs	35
FG00886	HD8R 8" 2-Way High Definition In-Wall Loudspeaker	pr	2 Pairs	36
FG00885	HD8 8" 2-Way High Definition In-Wall Loudspeaker*	pr	2 Pairs	36
FG00894	PSW8 8" Passive In-Wall Subwoofer	ea	2 Individual	38
FG00321	8 Series New Construction Bracket Kit	pr	2 Pairs	38
FG00320	6 Series New Construction Bracket Kit	pr	4 Pairs	38
FG00327	5 Series New Construction Bracket Kit	pr	4 Pairs	39
FG00941	IE6 Loudspeaker Enclosure	ea	2 Individual	39
FG00940	IE5 Loudspeaker Enclosure	ea	2 Individual	39
HD HIGH DEFINITION HOME THEATER LOUDSPEAKERS				
FG01151	HDLCR High Definition Left/Center/Right Channel In-Wall	ea	3 Individual	41
FG01154	HDLCRBX High Definition Left/Center/Right Channel Bookshelf	ea	N/A	41
FG01155	HDFX High Definition Side/Rear Channel Effects In-Wall	pr	4 Pairs	42
FG01152	LCR/FX Bracket Kit New Construction Bracket Kit	ea	10 Individual	43
FG01308	CM700 BKT New Construction Bracket	pr	4 pr	43
PHD PLASMA HIGH DEFINITION WALL MOUNT LOUDSPEAKERS				
FG01287	PHD42 Black 3-Way High Definition Wall Mount	ea	3 Individual	45
FG01286	PHD30 Black 2-Way High Definition Wall Mount	ea	3 Individual	45
STAGEFRONT HOME THEATER LOUDSPEAKERS				
FG01335	PRO1770LCR Left/Center/Right Channel	ea	N/A	50
FG01516	PRO1770 Grille Fabric Wrapped Grille Accesory	ea	10 Individual	50
FG01336	PRO2770LCR Dual Left/Center/Right Channel	ea	N/A	51
FG01517	PRO2770 Grille Fabric Wrapped Grille Accesory	ea	10 Individual	51
FG01337	PRO770FX On-Wall Special—Effects	pr	N/A	52
FG01518	PRO770FX Grille Set Fabric Wrapped Grille Accesory	pr	5 Paired Sets	52
FG01135	PRO1870LCR Left/Center/Right Channel	ea	N/A	53
FG01512	PRO1870 Grille Fabric Wrapped Grille Accesory	ea	10 Individual	53
FG01136	PRO2870LCR Dual Left/Center/Right Channel	ea	N/A	54
FG01513	PRO2870 Grille Fabric Wrapped Grille Accesory	ea	10 Individual	54
FG01137	PRO870FX On-Wall Special—Effects	pr	N/A	55

QUICK REFERENCE GUIDE

Stock No.	Part Description	Unit	Mstr. Carton	Pg No.
FG01514	PR0870FX Grille Set Fabric Wrapped Grille Accesory	pr	5 Paired Sets	55
FG01138	PR015SW 15" High-Performance Subwoofer	ea	N/A	56
FG01515	PR015SW Grille Fabric Wrapped Grille Accesory	ea	10 Individual	56
FG01330	IW2550LCR 5-1/4" Enclosed In-Wall Left/Center/Right Channel	ea	N/A	57
FG01329	IW2650LCR Enclosed In-Wall Left/Center/Right Channel	ea	N/A	57
FG01331	IW650FX Enclosed In-Wall Special Effects	pr	N/A	58
FG01327	IW2670LCR Enclosed In-Wall Left/Center/Right Channel	ea	N/A	59
FG01326	IW2770LCR Enclosed In-Wall Left/Center/Right Channel	ea	N/A	60
FG01328	IW770FX Enclosed In-Wall Special Effects	pr	N/A	61
POWERED SUBWOOFERS				
FG01236	SW10 10" 125 Watt Powered Subwoofer	ea	N/A	63
FG01237	SW12 12" 260 Watt Powered Subwoofer	ea	N/A	64
FG01359	SW10JM 10" Joist Mounted Subwoofer	ea	N/A	64
FG01360	SW10WM 10" Wall Mounted Subwoofer	ea	N/A	65
FG01361	SWA-500M Powered Subwoofer Amplifier	ea	N/A	65
OS INDOOR/OUTDOOR WEATHERPROOF LOUDSPEAKER				
FG00996	OS7.5 White High Performance Indoor/Outdoor Loudspeaker	pr	2 Pairs	68
FG00997	OS7.5 Black High Performance Indoor/Outdoor Loudspeaker	pr	2 Pairs	68
FG00990	OS7.3 White High Performance Indoor/Outdoor Loudspeaker	pr	2 Pairs	68
FG00991	OS7.3 Black High Performance Indoor/Outdoor Loudspeaker	pr	2 Pairs	68
FG00994	OS6.5 White High Performance Indoor/Outdoor Loudspeaker	pr	2 Pairs	69
FG00995	OS6.5 Black High Performance Indoor/Outdoor Loudspeaker	pr	2 Pairs	69
FG00988	OS6.3 White High Performance Indoor/Outdoor Loudspeaker	pr	2 Pairs	69
FG00989	OS6.3 Black High Performance Indoor/Outdoor Loudspeaker	pr	2 Pairs	69
FG00992	OS5.5 White High Performance Indoor/Outdoor Loudspeaker	pr	2 Pairs	70
FG00993	OS5.5 Black High Performance Indoor/Outdoor Loudspeaker	pr	2 Pairs	70
FG00986	OS5.3 White High Performance Indoor/Outdoor Loudspeaker	pr	2 Pairs	70
FG00987	OS5.3 Black High Performance Indoor/Outdoor Loudspeaker	pr	2 Pairs	70
FG01000	OS6.3Si White Stereo Input Indoor/Outdoor Loudspeaker	ea	4 Individual	71
FG01001	OS6.3Si Black Stereo Input Indoor/Outdoor Loudspeaker	ea	4 Individual	71
FG00998	OS5.3Si White Stereo Input Indoor/Outdoor Loudspeaker	ea	4 Individual	71
FG00999	OS5.3Si Black Stereo Input Indoor/Outdoor Loudspeaker	ea	4 Individual	71
POWERED SUBWOOFERS				
FG01236	SW10 10" 125 Watt Powered Subwoofer	ea	N/A	63
FG01237	SW12 12" 260 Watt Powered Subwoofer	ea	N/A	64
FG01359	SW10JM 10" Joist Mounted Subwoofer	ea	N/A	64
FG01360	SW10WM 10" Wall Mounted Subwoofer	ea	N/A	65
FG01361	SWA-500M Powered Subwoofer Amplifier	ea	N/A	65

QUICK REFERENCE GUIDE

Stock No.	Part Description	Unit	Mstr. Carton	Pg No.
OS INDOOR/OUTDOOR WEATHERPROOF LOUDSPEAKER				
FG00996	OS7.5 White High Performance Indoor/Outdoor Loudspeaker	pr	2 Pairs	68
FG00997	OS7.5 Black High Performance Indoor/Outdoor Loudspeaker	pr	2 Pairs	68
FG00990	OS7.3 White High Performance Indoor/Outdoor Loudspeaker	pr	2 Pairs	68
FG00991	OS7.3 Black High Performance Indoor/Outdoor Loudspeaker	pr	2 Pairs	68
FG00994	OS6.5 White High Performance Indoor/Outdoor Loudspeaker	pr	2 Pairs	69
FG00995	OS6.5 Black High Performance Indoor/Outdoor Loudspeaker	pr	2 Pairs	69
FG00988	OS6.3 White High Performance Indoor/Outdoor Loudspeaker	pr	2 Pairs	69
FG00989	OS6.3 Black High Performance Indoor/Outdoor Loudspeaker	pr	2 Pairs	69
FG00992	OS5.5 White High Performance Indoor/Outdoor Loudspeaker	pr	2 Pairs	70
FG00993	OS5.5 Black High Performance Indoor/Outdoor Loudspeaker	pr	2 Pairs	70
FG00986	OS5.3 White High Performance Indoor/Outdoor Loudspeaker	pr	2 Pairs	70
FG00987	OS5.3 Black High Performance Indoor/Outdoor Loudspeaker	pr	2 Pairs	70
FG01000	OS6.3Si White Stereo Input Indoor/Outdoor Loudspeaker	ea	4 Individual	71
FG01001	OS6.3Si Black Stereo Input Indoor/Outdoor Loudspeaker	ea	4 Individual	71
FG00998	OS5.3Si White Stereo Input Indoor/Outdoor Loudspeaker	ea	4 Individual	71
FG00999	OS5.3Si Black Stereo Input Indoor/Outdoor Loudspeaker	ea	4 Individual	71
WEATHERPROOF ROCKS AND PLANTERS LOUDSPEAKERS				
FG01129	RS8Si Speckled Granite 8" 2-Way Dual Tweeter Stereo Input	ea	N/A	73
FG01030	RS8Si Granite 8" 2-Way Dual Tweeter Stereo Input	ea	N/A	73
FG01032	RS8Si Coral 8" 2-Way Dual Tweeter Stereo Input	ea	N/A	74
FG01031	RS8Si Sandstone 8" 2-Way Dual Tweeter Stereo Input	ea	N/A	74
FG01466	RS8Si Shale Brown 8" 2-Way Dual Tweeter Stereo Input	ea	N/A	75
FG01470	RS6Si Speckled Granite 6" 2-Way Dual Tweeter Stereo Input	ea	2 Individual	76
FG01467	RS6Si Granite 6" 2-Way Dual Tweeter Stereo Input	ea	2 Individual	76
FG01469	RS6Si Coral 6" 2-Way Dual Tweeter Stereo Input	ea	2 Individual	77
FG01468	RS6Si Sandstone 6" 2-Way Dual Tweeter Stereo Input	ea	2 Individual	77
FG01471	RS6Si Shale Brown 6" 2-Way Dual Tweeter Stereo Input	ea	2 Individual	78
FG01130	RS6 Speckled Granite 6" 2-Way High Performance	ea	2 Individual	79
FG01027	RS6 Granite 6" 2-Way High Performance	ea	2 Individual	79
FG01029	RS6 Coral 6" 2-Way High Performance	ea	2 Individual	80
FG01028	RS6 Sandstone 6" 2-Way High Performance	ea	2 Individual	80
FG01465	RS6 Shale Brown 6" 2-Way High Performance	ea	2 Individual	81
FG01131	RS5 Speckled Granite 5" 2-Way High Performance	ea	4 Individual	81
FG01071	RS5 Granite 5" 2-Way High Performance	ea	4 Individual	82
FG01073	RS5 Coral 5" 2-Way High Performance	ea	4 Individual	82
FG01072	RS5 Sandstone 5" 2-Way High Performance	ea	4 Individual	83
FG01464	RS5 Shale Brown 5" 2-Way High Performance	ea	4 Individual	83
FG01264	PS6Si Terracotta Planter Loudspeaker	ea	N/A	84
FG01366	PS6Si Weathered Concrete Planter Loudspeaker	ea	N/A	84
FG01462	PB6Si Terracotta Planter Box Loudspeaker	ea	N/A	85
FG01463	PB6Si Weathered Concrete Planter Box Loudspeaker	ea	N/A	85

ADDITIONAL INFORMATION

Warranty

All Niles products are manufactured with reliability in mind and backed by factory warranties against defects in materials or workmanship. For details, see full warranty statement included with each product.

Customer Service and Technical Support

Call: 800-289-4434 (BUY-HIFI) in the USA or (760) 710-0992

internationally

Customer Service is available from 8:00 AM to 5:30 PM PST

Technical Support is available from 6:00 am to 4:00 pm PST

Online at: www.nilesaudio.com/techsupport

or via email: techsupport@nilesaudio.com

LIVE CHAT! Speak with techsupport online.

<http://www.nilesaudio.com/techsupport/chat.php>

Product Suggestions

We are eager to hear your product suggestions. Please e-mail your suggestions to: productsuggestions@nilesaudio.com

Niles strives to constantly improve our products, all specifications may change without notice.



©2011 The AVC Group LLC. All rights reserved. Niles, the Niles Logos, Blending High Fidelity and Architecture, Directed SoundField Geometry (DSFG), ElastoDynamic, Ingenious IR, IntelliControl, IntelliFile, IntelliPad, MicroFlasher, MicroSensor, Remote Control Anywhere!, SmartDock, Select, Solo, StageFront Home Theater Solutions, and Systems Integration Amplifiers are registered trademarks of The AVC Group LLC. Cone Forward, GeoRealistic, iC2, iWARE, MicroPerf, QuickSnap and Twist & Lock are trademarks of The AVC Group LLC. All other trademarks are the properties of their respective owners. Some of Niles products (or components thereof) are manufactured under one or more U.S. Patents, foreign equivalents and/or pending patents (see product for details). We reserve the right to change specifications, descriptions, and prices without notice. The technical and other information contained herein is not intended to set forth all technical and other specification. Additional information can be obtained on-line at www.nilesaudio.com or by calling Niles at 800-289-4434.

LT00319A-Catalog



The AVC Group LLC
1969 Kellogg Avenue, Carlsbad, CA 92008 Tel: 1.800.289.4434 – (760) 710-0990 – www.nilesaudio.com