



REFLEX™ ROLL SKYLIGHT

→ INTRODUCTION

> To answer the growing demand for a product to deliver the ultimate in solar protection and light control for ceiling, skylights or angled applications, **REFLEX™** has developed the **REFLEX™ SKYLIGHT** range of skylight cassette roller blinds in two sizes and a great variety of options to adapt to the demands of both external solar protection applications and internal “blackout” style audio visual quality light control applications.

APPLICATION

> The popular applications for this system are two fold. Firstly, integration into building facades for the ultimate control of heat and glare by protecting the glass from the outside against solar extremes, together with fully automatic controls, will deliver a complete solar control system. The cassette would ideally be installed close to the glazing and with the inclusion of aluminium side guides, and the incorporation of sun, wind and timing controls, this system will exceed all expectations for aesthetics and solar control.

Secondly, the system can be integrated into the lighting control system for internal applications such as meeting rooms, theatres, laboratories and other areas requiring complete darkening.

SPECIFICATIONS

> The most appealing feature of the **REFLEX™ SKYLIGHT** system is the range of options. The **REFLEX™ SKYLIGHT** system has options of three or four sided roller coverage (when the back of the roller will be visible) and a versatile, nylon plate mounting system allowing face, top or side fixing. The incorporation of side guiding systems utilising one of the powder coated, aluminium side guide channels - (40 x 25 mm plain for external applications or 40 x 25 mm light sealing guides for internal applications) may be necessary.

The **REFLEX™** skylight blind is intended for use in applications calling for horizontal operation where both ends of the blind have rollers within cassettes, with the inclusion of a spring tension system in the second housing, to create a full tension system for the fabric element.

All covers are powder coated or anodised 1.6 mm aluminium and the rollers are 60 mm (**RS8**) & 80 mm (**RS10**) and are all natural anodised for strength and durability.

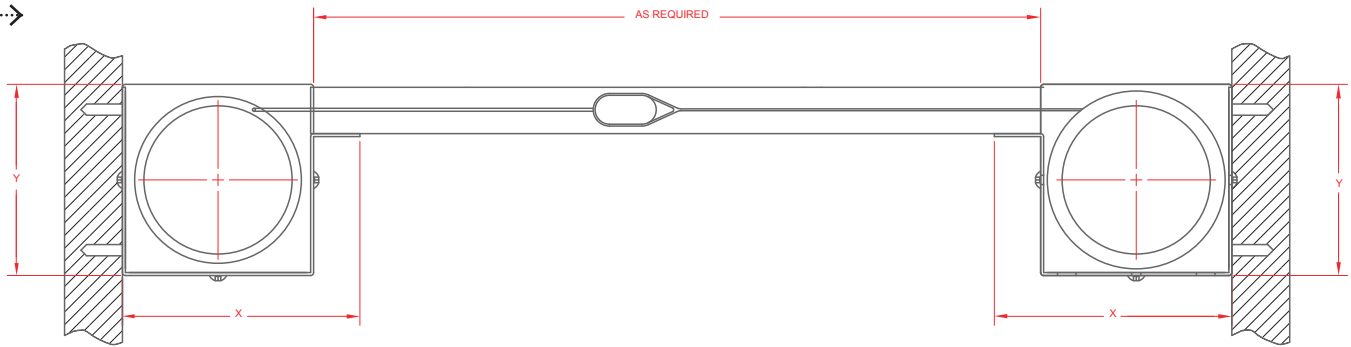
All internal and external components are completely weather proof being aluminium, nylon or stainless steel.

The system can support the many screen, solid or sheer fabric elements currently available in the market remembering that the skylight series should only use those fabrics with a suitable mechanical strength to withstand the tension loads.

The side guide channels can also be employed to allow blinds to be installed in sloping glass wall situations.

Minimum width	=	350 mm
Maximum width	=	3,000 mm
Minimum drop	=	500 mm
Maximum drop	=	3,000 mm

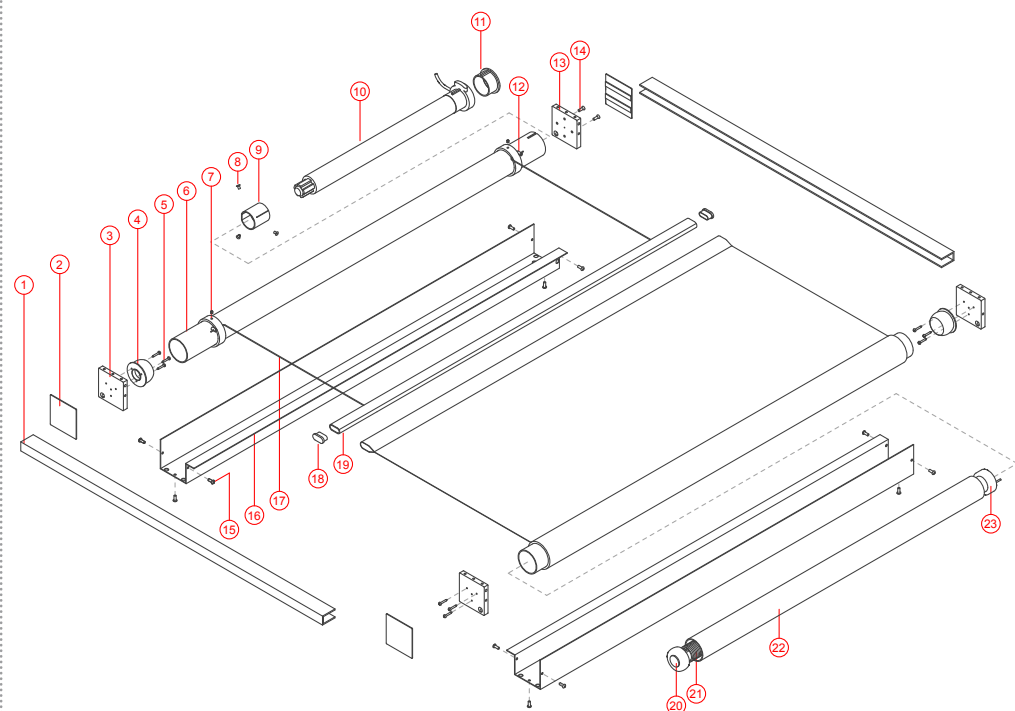
REFLEX™ ROLL SKYLIGHT



	RS8	RS10
X =	109	129
Y =	82	102

RECESS FIXING ARRANGEMENT

REFLEX™ ROLL SKYLIGHT EXPLODED



ITEM	DESCRIPTION
1.	SKYLIGHT SIDE GUIDE
2.	END COVER PLATE
3.	END PLATE - TAIL
4.	BEARING
5.	BEARING SCREW
6.	ROLLER TUBE
7.	CORD RING
8.	RIVET
9.	MOTOR WHEEL
10.	MOTOR
11.	MOTOR CROWN
12.	SCREW-ON SWAGE
13.	END PLATE - MOTOR
14.	MOTOR FIXING SCREW
15.	COVER MOUNT SCREW
16.	COVER
17.	PULL CABLE
18.	BASE RAIL END CAP
19.	BASE RAIL
20.	SPRING HEAD BOSS
21.	SPRING
22.	OUTER SLEEVE
23.	SPRING TAIL BOSS